



September 2016

lynda.com



HOW DO I FIND LYNDA.COM?

In-Library and at Home (with a valid LAPL card)

- Go to www.lapl.org, and **click** the “Online Learning” link or the “Research & Homework” link; **LYNDA.COM** is listed alphabetically on both resulting pages.
- If you visit the Research & Homework page, you can narrow the list of resources by **selecting** “Online Learning” or “Science & Technical” from the checkboxes at the top of the page and **clicking** the “Find It” button.

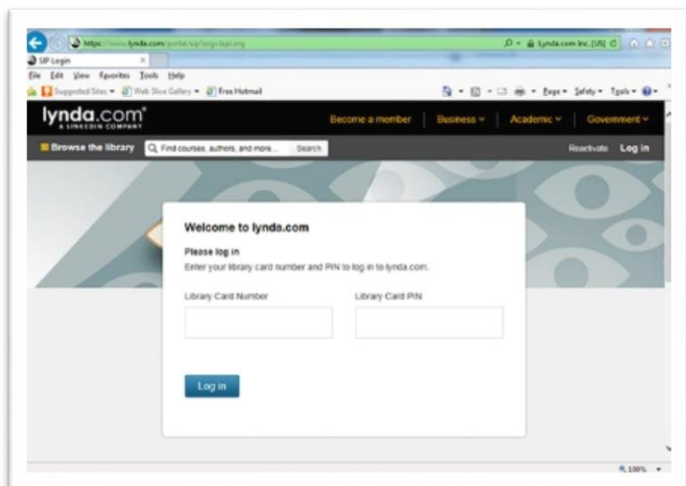
THE LYNDA.COM APP:



The **LYNDA.COM** app is available for free in your app store. To login to the app, **choose** "Already a member." **Select** the organization tab and scroll down to "web portal." **Type** "lapl.org" & **press** enter. Use your library card number and PIN to login.

DESCRIPTION

LYNDA.COM is an award-winning online learning site that offers more than more than 3,000 courses taught by recognized industry experts, and 150,000 video tutorials on business, technical and creative skills. Video transcripts are searchable for quick answers. After you complete a course, you can tell friends and potential employers about your new skill by uploading the Certificate of Completion to your LinkedIn profile.

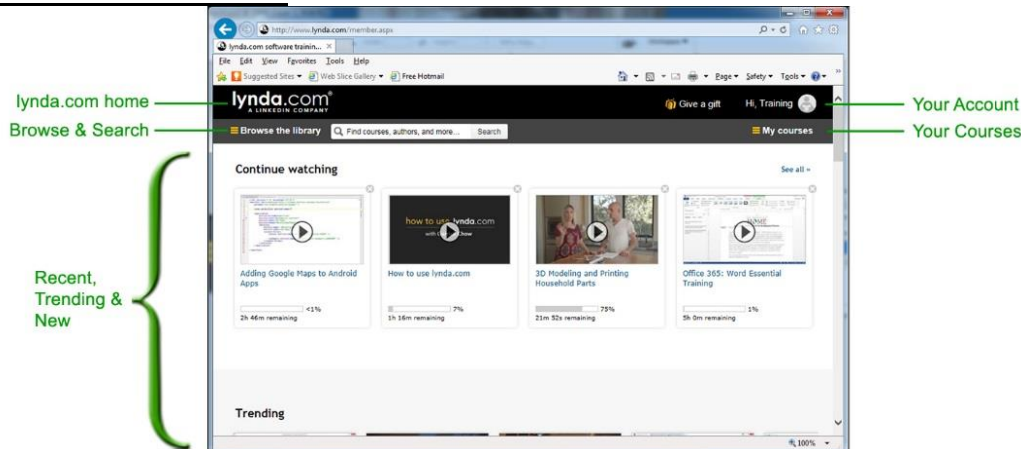


HOW TO BEGIN

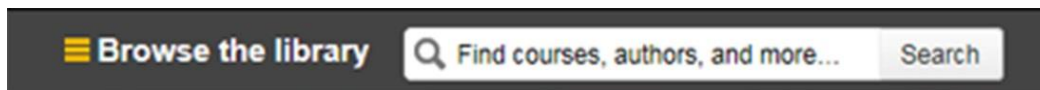
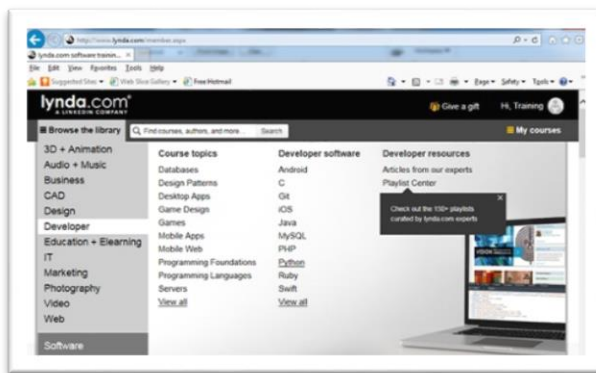
Login

- 1) **Enter** your library card number (the number beneath the bar code on the back of your library card.)
- 2) **Enter** your personal identification number (PIN – usually the last four [4] digits of the telephone number on your library card account.)
- 3) **Click** the “Log in” button to go to the **LYNDA.COM** home page.

THE *LYNDA.COM* HOME PAGE:



FIND COURSES



Browse courses by **moving** your mouse over “Browse the Library” in the upper left side of your window.

Search for courses by **clicking** into the search field and **typing** a subject, keyword, name, or author. A clickable list of potential matches will appear as you type.

LOG OUT

When you have finished using *LYNDA.COM*, click the link that reads “Hi, [your name]” in the upper right corner and choose “Log out.” *LYNDA.COM* will save your progress for the next time you log in.

MINIMUM SYSTEM REQUIREMENTS:

Safari 6 or later, Google Chrome 11 or later, Firefox 30 or later, Internet Explorer 10 or later; Mac OS 10.8

HELP

Additional help is available at the bottom of each *LYNDA.COM* web page under “Support.”

