

DOOR ACCESS CONTROL SYSTEM SPECIFICATIONS

1, Door Access Controller

The preference for the door access controller will be an IP-based platform that operates on power provided by Power over Ethernet capable data ports. The door access controller units may either operate in a centralized architecture (multiple doors per controller), or a decentralized architecture (1-2 doors per controller).

The door access controller will require only one CAT6 cable connected to the Library provided network PoE+ switch port to function and will provide power for both the card reader and the door strike. The network switch port will provide up to 30 watts of power. The CAT6 cable that is provided will be Green in color. If more power is required for the door access solution to work, it will be the responsibility of the Vendor to provide additional power injector(s) as necessary. Any such additional equipment must be housed in the technology closet. Additional wiring components that are installed must be of the proper rating.

The controller must fit in an enclosure no larger than a standard two-gang electrical box. A controller will be installed at each door location. All doors and frame materials consist of metal and glass construction.

2. Door Controller Enclosure Cover

The door controller enclosure cover will house the controller, and the card reader will mount on the enclosure cover. The enclosure will be a standard two-gang electrical box provided by others. The enclosure cover will be metal, tamper-resistant, and secured to structure with tamper-proof fasteners.

Exterior enclosures will meet IP66 standards.

3, Exterior Intercom

All building main entrances will require an Aiphone (or equivalent) device for providing intercom to identify individuals requesting entry into the building. The exterior system must tie into the door access control system to allow building administrators to “buzz” individuals into the facility’s main entrance when locked.

4. Door Strike

The door strike will be of commercial quality and designed to function with the power provided by the controller. The strike will be designed to hold an unlock state for up to five (5) minutes. The actual unlock time required at each door will be determined by LAPL. The Vendor is responsible for selecting the correct type of door strike for each door shown on the drawings. The Vendor is responsible for installing the required wiring from the controller to the door strike.

5. IP Multi-Reader

The multi-reader will be designed for both indoor and outdoor use. The reader will support HID proximity cards and iCLASS cards. The reader will provide visual indication through a change from Red to Green when a card is successfully scanned. The reader will be powered by the door controller and will be attached to the controller enclosure. All fasteners will be tamper.

6. Accessible Door Access Control

The order of operations for unlocking and opening a door when the ADA button is depressed will be reviewed with the District and validated during the walkthrough with the awarded vendor. LAPL must sign-off on the agreed-upon method of access into the building with a DAC unit and ADA functionality.

7. Access Control Management Software

The management software must support a minimum of six hundred (600) active card users. The software must have a GUI user interface and be remotely accessed via a web-based interface.

The software must be capable of assigning users to zones and allow each user to have access to specific doors.

The access control management system must allow remote triggers to unlock doors, programs for holidays, weekends, and special one-time occasions.

The access control management system must be able to perform an emergency lockdown from any authorized computer. The Vendor must identify the virtual server system resource (memory, CPU, storage, and network) requirements for the management system.

A standalone server-based management system will also be accepted. However, if a standalone management system or appliance is required, the vendor must include all the necessary hardware to operate the management system.

The access control management system must be licensed to allow a minimum of five (5) system administrators to manage the system simultaneously.

8. Proximity Card Printer

The Vendor will provide and install a color proximity card printer designed to print up to five hundred (500) cards per year.

9. Proximity Cards (optional)

As an option, the Vendor will provide an HID proximity card for a quantity of 500 with additional pricing for increments of 100 cards.

10. Specification Sheets

The Vendor must provide specification sheets for all products proposed (e.g., door strikes, proximity cards, proximity readers, controller, and access control management software. All specification sheets must be submitted in an electronic form (PDF, XPS, or DOCX).

ENTERPRISE SECURITY CAMERA/VIDEO

1. Interior Cameras

The standard video camera will be an HD IP interior camera and must meet or exceed the following specifications:

Feature	Min. Requirement
Megapixel	3 MP / 2048 (H) x 1536 (V)
Image sensor	WDR 1/3" progressive scan CMOS
Lens	4.5 mm (H) x 3.4 mm (V) (0.177" (H) x 0.133" (V))
Minimum illumination color	35° - 105° 0.2 lux (F1.2) in color mode; 0.02 lux (F1.2) in monochrome mode 26° - 35° 0.4 lux (F1.6) in color mode; 0.04 lux (F1.6) in monochrome mode
Viewing angle	35° - 105° 3-9 mm, F1.2, P-Iris, remote focus and zoom 26° - 35° 9-22 mm, F1.6, P-iris, remote focus and zoom
Video compression	H.264 (MPEG-4 Part 10/AVC), Motion JPEG
Video streaming	Multi-stream H.264 and Motion JPEG
Frame Rate (H.264, Motion JPEG)	20 (at full resolution), 30 (at 1920 x 1080 or smaller)
Image settings	Wide dynamic range (WDR), manual shutter time, compression, color, brightness, sharpness, white balance, exposure control, exposure zones, backlight compensation, fine tuning of behavior at low light, rotation, text and image overlay, privacy mask to hide sensitive areas, image freeze on PTZ
Network interface	Min. of 1 100/1000Tx with RJ45 connector
External interfaces	External input / output interface for connecting external alarms and relays
Supported protocols	IPv4/v6, HTTP, HTTPS, TCP, ICMP, SNMP v1 / v2 /v3 (MIB-II), RTSP, RTP, UDP, IGMP, RTCP, SMTP, ARP, DNS, and NTP
Security	Password protection, IP address filtering, HTTPS encryption, IEEE 802.1X network access control
Application Programming Interface	Open API for software integration
Event triggers	Video motion detection, preset, temperature, memory card full
Camera Housing	IP66- and NEMA 4X-rated metal casing (aluminum), acrylic (PMMA) clear dome, sunshield (PC/ASA) Impact resistant plastic or metal

Input power	Power over Ethernet (PoE) IEEE 802.3af, max. 15 W (owner will provide PoE power)
Operating conditions	Temperature: 0 °C to 50 °C (32 °F to 122 °F) Humidity: 15 - 85% RH (non-condensing)

The vendor is requested to submit samples of the camera images / video footage under normal daylight and night (low lux) conditions.

2. Interior 180-degree Camera

The standard interior 180-degree camera will be a HD IP interior camera and will meet or exceed the following specifications:

Feature	Min. Requirement
Megapixel	8.0-megapixel progressive scan
Image sensor	4 x 1/4" progressive scan CMOS
Lens	F2.0 / 4.4 mm
Minimum illumination color	0.6 lux (F2.0)
Viewing angle / Pan / Tilt /	Digital PTZ, presets, multipoint guard tour
Zoom	
Video compression	Multi-stream H.264 and Motion JPEG
Video streaming	Multiple, individually configurable streams in H.264 and Motion JPEG
Frame Rate (H.264, Motion JPEG)	Up to 30 fps
Image settings	Wide dynamic range (WDR), manual shutter time, compression, color, brightness, sharpness, white balance, exposure control, exposure zones, backlight compensation, fine tuning of behavior at low light, rotation, text and image overlay, privacy mask to hide sensitive areas, image freeze on PTZ
Network interface	Min. of 1 100/1000Tx with RJ45 connector
External interfaces	External input / output interface for connecting external alarms and relays
Supported protocols	IPv4/v6, HTTP, HTTPS, TCP, ICMP, SNMP v1 / v2 /v3 (MIB-II), RTSP, RTP, UDP, IGMP, RTCP, SMTP, ARP, DNS, and NTP
Security	Password protection, IP address filtering, HTTPS encryption, IEEE 802.1X network access control
Application Programming Interface	Open API for software integration
Event triggers	Video motion detection, preset, temperature, memory card full

Camera Housing	IP66- and NEMA 4X-rated metal casing (aluminum), acrylic (PMMA) clear dome, sunshield (PC/ASA) Impact resistant plastic or metal
Camera Mount	Tilt mount for low hanging ceiling environments
Input power	Power over Ethernet Plus (PoE+) IEEE 802.3at, max. 30 W (owner will provide PoE/PoE+ power)
Operating conditions	0 °C to 50 °C (32 °F to 122 °F) Humidity: 20 - 80% Relative humidity (non-condensing)

The vendor is requested to submit samples of the camera images / video footage under normal daylight and night (low lux) conditions.

3. Exterior Cameras

The standard exterior camera for outdoor area such as sidewalks will be a HD IP exterior camera (non-PTZ) and will meet or exceed the following specifications:

Feature	Min. Requirement
Megapixel	5 MP / 2560 (H) x 1960 (V)
Image sensor	WDR 1/3" progressive scan CMOS
Lens	28° - 84° 3-9 mm, F1.2, P-Iris, remote focus and zoom 12° - 28° 9-22 mm, F1.6, P-Iris, remote focus and zoom
Minimum illumination color	28° - 84° 0.2 lux (F1.2) in color mode; 0.02 lux (F1.2) in monochrome mode 12° - 28° 0.4 lux (F1.6) in color mode; 0.04 lux (F1.6) in monochrome mode
Viewing angle	28° - 84° 12° - 28°
Video compression	Multi-stream H.264 (MPEG-4 Part 10/AVC) and/or Motion JPEG
Video streaming	Multiple, individually configurable streams in H.264 and Motion JPEG
Frame Rate (H.264, Motion JPEG)	20 (at full resolution), 30 (at 1920 x 1080 or smaller)
Image settings	Wide dynamic range (WDR), manual shutter time, compression, color, brightness, sharpness, white balance, exposure control, exposure zones, backlight compensation, fine tuning of behavior at low light, rotation, text and image overlay, privacy mask to hide sensitive areas, image freeze on PTZ
Network interface	Min. of 1 100/1000Tx with RJ45 connector
External interfaces	External input / output interface for connecting external alarms and relays
Supported protocols	IPv4/v6, HTTP, HTTPS, TCP, ICMP, SNMP v1 / v2 /v3 (MIB-II), RTSP, RTP, UDP, IGMP, RTCP, SMTP, ARP, DNS, and NTP
Security	Password protection, IP address filtering, HTTPS encryption, IEEE 802.1X network access control

Application Programming Interface	Open API for software integration
Event triggers	Video motion detection, preset, temperature, memory card full
Camera Housing	IP66- and NEMA 4X-rated metal casing (aluminum), acrylic (PMMA) clear dome, sunshield (PC/ASA), Moisture Resistant
Input power	Power over Ethernet (PoE) IEEE 802.3af, max. 15 W (owner will provide PoE power)
Operating conditions	Temperature: -30°C to +50°C (-22°F to 122°F) (with heater option) Humidity: 20 - 80% RH (non-condensing)

The vendor is requested to submit samples of the camera images / video footage under normal daylight and night (low lux) conditions.

4. Exterior 180-degree camera

The standard exterior 180-degree camera will be a HD IP exterior camera and must meet or exceed the following specifications:

Feature	Min. Requirement
Megapixel	8.0-megapixel progressive scan
Image sensor	4 x 1/4" progressive scan CMOS
Lens	F2.0 / 4.4 mm
Minimum illumination color	0.6 lux (F2.0)
Viewing angle / Pan / Tilt / Zoom	Digital PTZ, presets, multipoint guard tour
Video compression	Multi-stream H.264 and Motion JPEG
Video streaming	Multiple, individually configurable streams in H.264 and Motion JPEG
Frame Rate (H.264, Motion JPEG)	Up to 30 fps
Image settings	Wide dynamic range (WDR), manual shutter time, compression, color, brightness, sharpness, white balance, exposure control, exposure zones, backlight compensation, fine tuning of behavior at low light, rotation, text and image overlay, privacy mask to hide sensitive areas, image freeze on PTZ
Network interface	Min. of 1 100/1000Tx with RJ45 connector
External interfaces	External input / output interface for connecting external alarms and relays
Supported protocols	IPv4/v6, HTTP, HTTPS, TCP, ICMP, SNMP v1 / v2 /v3 (MIB-II), RTSP, RTP, UDP, IGMP, RTCP, SMTP, ARP, DNS, and NTP
Security	Password protection, IP address filtering, HTTPS encryption, IEEE 802.1X network access control
Application Programming Interface	Open API for software integration

Event triggers	Video motion detection, preset, temperature, memory card full
Camera Housing	IP66- and NEMA 4X-rated metal casing (aluminum), acrylic (PMMA) clear dome, sunshield (PC/ASA) Impact resistant plastic or metal
Input power	Power over Ethernet Plus (PoE+) IEEE 802.3at, max. 30 W (owner will provide PoE/PoE+ power)
Operating conditions	-30 °C to +50 °C (-22 °F to 122 °F) (with heater option) Humidity: 20 - 80% Relative humidity (non-condensing)

The vendor is requested to submit samples of the camera images / video footage under normal daylight and night (low lux) conditions.

5. Exterior 360-degree HD Camera

The vendor is requested to submit samples of the camera images / video footage under normal daylight and night (low lux) conditions.

Feature	Min. Requirement
Megapixel	8.0-megapixel progressive scan
Image sensor	4 x 1/4" progressive scan CMOS
Lens	F2.0 / 2.4 mm
Minimum illumination color	0.6 lux (F2.0)
Viewing angle / Pan / Tilt / Zoom	Digital PTZ, presets, multipoint guard tour
Video compression	JPEG2000
Video streaming	Multiple, individually configurable streams in H.264 and Motion JPEG
Frame Rate (H.264, Motion JPEG)	7 images per sensor
Image settings	Wide dynamic range (WDR), manual shutter time, compression, color, brightness, sharpness, white balance, exposure control, exposure zones, backlight compensation, fine tuning of behavior at low light, rotation, text and image overlay, privacy mask to hide sensitive areas, image freeze on PTZ
Network interface	Min. of 1 10/100Tx with RJ45 connector
External interfaces	External input / output interface for connecting external alarms and relays
Supported protocols	IPv4/v6, HTTP, HTTPS, TCP, ICMP, SNMP v1 / v2 /v3 (MIB-II), RTSP, RTP, UDP, IGMP, RTCP, SMTP, ARP, DNS, and NTP
Security	Password protection, IP address filtering, HTTPS encryption, IEEE 802.1X network access control
Application Programming Interface	Open API for software integration

Event triggers	Video motion detection, preset, temperature, memory card full
Camera Housing	IP66- and NEMA 4X-rated metal casing (aluminum), acrylic (PMMA) clear dome, sunshield (PC/ASA) Impact resistant plastic or metal, vandal resistant
Input power	Power over Ethernet Plus (PoE+) IEEE 802.3at, max. 30 W (owner will provide PoE/PoE+ power)
Operating conditions	-30 °C to +50 °C (-22 °F to 122 °F) (with heater option) Humidity: 20 - 80% Relative humidity (non-condensing)

The vendor is requested to submit samples of the camera images / video footage under normal daylight and night (low lux) conditions.

6. External Mounts

All internal and external cameras must be or installed in vandal resistant enclosures. The specifications below provide the minimum requirements for an external mount. The cost of the external mount must be included as a part of the base bid. The vendor may provide unit pricing for alternate / optional mounts using Appendix G, Proposed Schedule/Price Fee.

Feature	Requirement
Dimensions (H x W x L)	Bullet or pendant dome dependent on proposed camera; camera must comfortably accommodate the cameras
Construction	Aluminum casing with silicone gaskets and stainless-steel hardware
Blower/Heater	Integrated 12V / 24V DC heater blower fan
Color	Gray or white; paintable surface preferable but not required
Window	Dependent on proposed camera
Locking clasps	Tamper-resistant screws provided
Camera mounting	Removable camera/lens tray, mounted with two screws
Mounting holes	Minimum of 2 x pair of mounting holes to securely fasten the housing to the building infrastructure
Power supply	Power-over-Ethernet Plus (PoE+) IEEE 802.3at or 24 VDC / 12 VDC (compatible with external power supply if one is required)
Power consumption (housing only)	Maximum of 14 Watts
Power handling (housing + camera)	30 W max.
Operating temperature - external	External: -30 °C to +50 °C (-22 °F to +122 °F) Internal: -20 °C to +50 °C (-4 °F to +122 °F)
Certifications	Underwriters Lab (UL), FCC

7. Power Transformers (optional)

If the exterior camera housing enclosures requires additional power to support an optional heater and blower components, the Vendor will include pricing for a power supply (transformer) and necessary cabling. Power supplies (transformers) and cabling will only be required if power requirements for the external cameras are greater than what is deliverable by the IEEE 802.1af/802.1at standard. For the purpose of this RFP, for every external camera that requires an external power transformer, one will be included.

Even if an external power supply is not required, unit pricing for the specified power transformers is requested to accommodate any unique situations that may necessitate one. Please provide optional unit pricing in Appendix G – Proposed Schedule/Price Fee..

Feature	Requirement
Electrical	Input: 120 VAC, 60 Hz Output: 12 or 24 VAC, 60 Hz, 1.25 / 2 VA Optionally a model with multiple outputs of 12 or 24 VAC, 1.25 A, 30 VA is also requested
Connectors	Input: 2-prong, North American standard (non-polarized) Output: Two (2) screw terminals
Maximum Distance	305 m (1000 ft.) - 0.65 mm (22 AWG)305 m (1000 ft.) – 2 mm (18 AWG)Unshielded wire only
Operating conditions	Temperature: –10°C to 40°C (14°F to 104°F) Humidity: 30% to 85% relative

Appendix C

VIDEO MANAGEMENT SYSTEM SPECIFICATIONS

For the proposed system, it is the responsibility of the vendor to ensure the all current cameras (IP and analog encoders) will work with the proposed VMS solution. The Video Management System will reside at Central Library. At a minimum, VMS system must support the existing number of cameras identified in **Appendix F**.

The Video Monitoring/Management System (VMS) shall provide a system that allows the LAPL to view images from the cameras and manage the cameras from a single interface/application across the data network. The Vendor must provide the recommended specifications for Storage and Server hardware to support the entire system. There will be no bottlenecks inherent to the proposed system that impacts the performance and/or functionality of the system. For these components, the bill of materials and the pricing for the Base Bid will be presented using the forms **Appendix G Proposed Schedule/Price Fee**. The add alternate will include the incremental cost to add the features and functionality requested in Add Alternate-1.

The following are the minimum requirements for the VMS that will be installed at Central and 72 Branch Libraries of LAPL.:

1. Camera / Device Connection Licensing

If system licensing is dependent on the number of cameras/devices connected/managed, system licensing shall be priced for the base and add alternate bids only. Licensing for the growth requirements must not be included at this time, but the system should have the ability to add more licenses to accommodate the growth while preserving the investment made by the LAPL.

2. Licensing Model

The cost for the VMS system and all components must be based on the annual license costs (exclusive of warranty costs). Additional cost for system upgrade and support must be included in the proposal.

3. Map Navigation

Building floor plans will be imported into the VMS for easy camera navigation. The floor plans in JPEG and Microsoft Visio formats will be made available the Vendor. Selecting a camera on the building map will open either thumbnail and/or live streaming images from that selected camera.

4. Camera Zones

The system shall have the ability to group cameras in a region (i.e., create zones). Each zone may consist of cameras in the same building or across multiple buildings.

5. Archive / Stored Video Search

The system will provide the ability to search video events such as motion

detection events, date/time stamp etc. The system must also be capable of performing searches on multiple cameras based on a given criteria. The Vendor will clearly state in detail the system archived video search capabilities.

6. Half/Full Duplex Live Audio

If the proposed or future cameras have full/half duplex audio capabilities, the video management system should support half/full duplex live audio capability. If audio feature capabilities are supported, the audio communications (transmit and receive) should across the IP/Ethernet infrastructure without the need for additional cabling.

7. Matrix View Support

The system shall have the capability for viewers to view images from multiple cameras simultaneously. The matrix layout shall, at a minimum, support 1, 2, 4, 8, and 16 simultaneous camera views. Users shall have the option to customize and save screen layouts for simple selection of cameras of interest. This feature must be available to “viewing mode only” clients also via an Internet browser such as Microsoft IE 10.x, Chrome 50, Opera 40, and Safari or higher.

8. Camera Cycling

The user logged in either a “viewing only” or “administrative mode” should have the ability to cycle through a predetermined set of cameras in order to setup automated viewing station.

9. Simultaneous Viewer Clients

The system shall support simultaneous camera(s) viewing by a minimum of **twelve (12)** clients via a client software or a compatible HTTP interface/browser such as Microsoft IE 10.x, Chrome 50, Opera 40, and Safari or higher. Each user shall have independent capability to use the matrix view and camera cycling described above. The viewing only capability will not provide for any administrative type functions.

10. Simultaneous System Administrative Clients

The system shall support simultaneous administrative access by a minimum of **four (4)** clients via a client software or a compatible HTTP interface/browser such as Google Chrome, Firefox and Microsoft Internet Explorer and Apple Safari. Administrative access functionality will be restricted to the class of service defined for that user. If tablet-based apps (IOS, Android or Windows) are available, the apps will be made available at no additional cost to the LAPL.

11. Remote Viewing (Internet & Mobile Data Terminals)

The VMS must provide the ability to view live video transmissions and archived videos across the Internet. Video must be viewable from mobile data terminals in public safety (police) vehicles without the use of proprietary client software. Remote viewing on the LAN and WAN via an Internet browser a requirement. The Vendor will include all and necessary equipment for the ability to view the video across the LAN and Internet (e.g. video transcoder gateway if necessary). The Vendor must clearly state the network/firewall rules to be created and the bandwidth requirements per

remote WAN session that the LAPL must provision for system access via the Internet.

Administrative access functionality will be restricted to the class of service defined for that user. If tablet-based apps (IOS, Android or Windows) are available, the apps will be made available at no additional cost to the LAPL.

12. View & Download Archived Video

Users authorized for live or archived image viewing only will **NOT** have the capability to download archived video. Users with privileges to view archived video shall not automatically have the capability to download archived video unless the user has specific privileges to do so. Several users may have the ability to view archived video only and a very few select users will be provided with the capability to view and download archived video. It may also be desirable to restrict how much that a user with appropriate privileges may have access to the archived video (i.e., number of hours or days that a user can go back into the archives). The granular ability to control user-based access to archived video and the ability to restrict download capabilities is considered to be an important functional requirement of the system.

13. DVD Type Controls

Authorized users with archived video playback privileges shall be able to access the archived video with DVD type controls.

14. Video Export Functionality

The system will provide the functionality to export archived video in a tamper proof manner that is acceptable by the judicial system. Exported video will be minimum support **H.264** or **MJPEG** standards video. Only system authorized accounts will have the ability to export the video and if possible, from a defined workstation or server only. If licensing is required to view the recorded video, the Vendor will provide the appropriate number of licenses equivalent to the simultaneous viewing only and administrative users count. If the system can export to other video formats, please specify.

15. Alarm Monitoring and Logging

The system shall provide real-time alarm monitoring interface that provides real-time text viewing of events such as motion detection, camera connectivity, recording server status, and other related system wide events. The system will provide the ability to click on an event that will be hyperlinked to that instance or device. All of the events will be logged, and the user shall have the capability to perform simple and advanced searches based on events in the log.

16. Administration HTTP/HTTPS Interface

All of the administrative features described shall be accessible via an intuitive Graphical User Interface (GUI) via a client software or a secure (https) internet browser such as Microsoft IE 8.x or higher.

17. Expansion Capabilities

The VMS hardware (servers and storage) shall be configured at a minimum to support all existing and added cameras. It is desirable that the storage system be capable of expansion by adding additional internal or external disk drives and shelves.

18. Time Lapse & Motion Detection Recording

During inactive periods in the buildings (off hours), when there are no changes to the image/frame, the system will cease recording until a change in image has been noticed (i.e. motion detection). The system will have the intelligence to automatically start recording images from a camera once a change in frame has been noticed. It is desirable that the motion detection sensitivity can be adjusted. Please state if camera-based motion detection is supported. The system will support time lapse recording (i.e., system record periodically rather than continuously). The time lapse interval must be configurable. Other techniques to conserve on disk space and bandwidth should be stated.

19. Schedule/Event Recording & Playback

The system will allow for the definition of a schedule for recording based on time and/or an event. The system will allow for the playback of archived video based on time, data, camera, or event type.

20. Recording Frame Rate & Resolution

It is desirable that the system allows the capability to configure the recording of the frame rate and resolutions of the video images received from the camera (i.e., the live video streaming frame rate and resolution may be different from the actual recorded video). This must be configurable on an individual camera basis.

21. Recording Capabilities

Recording capabilities must include the following:

- Picture recording for the included cameras shall be capable of recording up to the maximum resolution of the camera.
- The recording provides a date and time stamp option
- Capable of providing video data in a manner consistent with the handling and conveyance of video forensic evidence (tramper proof).
- Video must be reasonably accurate in representing what it depicts. It must be self- verifying, providing enough of a detailed picture of the scene for a witness to confirm the area is accurately depicted.
- Real-time playback without interrupting recording
- Adjustable frame rate and resolution recording camera by camera
- Allows authorized users to capture still pictures in multiple formats
- Allows authorized users to record live streaming video or download

archived video in an industry recognized format

The system will have a DVD writer to provide the ability to transfer archived/recorded video.

22. Archiving

The system will have the ability to automatically rotate out old stored video when needed, utilizing a FIFO queuing method. The archiving period must be user definable. A backup device is not required at this time. The LAPL requires that 30 days of archives are maintained for historical purposes.

23. Camera Configuration

The various configuration parameters of the cameras should be controllable from the proposed monitoring & management system.

24. Watermark

The system shall have the ability to add a digital watermark to the video for authenticity purposes.

25. System Load Sharing and Redundancy

If the proposed solution requires the use of multiple servers to monitor and manage the surveillance system, it is desirable that load sharing and redundancy must be taken into consideration when the system is implemented.

26. User Groups & Rights

The system should support a multi-level user environment with the ability to create unlimited user accounts. The granular ability to control user based functions and access to the system is considered to be an important functional requirement of the system. By user and/or by group, the access (privileges) to resources should be controllable such as:

- Camera viewing access
- Recording & Downloading access
- Day and Time for access to the system
- Other configurable 'class-of-services' will be described

User accounts will be password protected and a user historical activity log is a requirement.

27. Error Notification

The system will provide email notification of system and other user defined alerts (e.g., unreachable camera, storage capacity thresholds) via email. The system will utilize existing email systems to provide notification.

28. Other Features

Other features and functionality desired in the system are:

- Full system event log for support, diagnosis and system usage monitoring
- When possible support and diagnosis of attached cameras.
- Ability to support redundant recording if there is a failure on the primary server
- System configuration backup utility.
- Support for internal storage, Network Attached Storage (NAS), Direct Attached Storage (DAS), Storage Area Networks (SAN), and iSCSI storage systems.
- Access Control System integration - Please define the proposed system's ability to integrate with the access control system.
- Other features of significance that the Vendor would like to draw attention to the Library should be stated in a clear and concise manner in the project summary document.

29. Advanced VMS Features (Add Alternate – 1)

The following advanced features for VMS are being requested. If these features are NOT a part of the base solution and are offered as “Add on Modules” to the base VMS solution, the cost to add these features should be shown as a part of the Add Alternate-1 solution and not in the base bid solution. If the licensing for these features is based on the number of cameras, then the vendor should use the existing camera counts identified in **Appendix F** as the baseline. To allow for flexibility, the vendor must provide unit cost (per camera cost) to add these features. If the “per unit cost” is different than the cost based on the cumulative quantiles, this must be clearly identified. If not specifically identified, the resulting unit cost based on the cumulative quantiles will be used to determine the pricing if desired quantities change. The advanced VMS features requested are:

- *Events based recording* - pre and post buffer recording up to 10 minutes
- *Video analytics* - Ability to detect on live and recorded video to support missing object, object tracking, camera tampering, zone intrusion, stopped vehicle, vehicle tracking, and image enhancement of tracked objects.
- *Object tracking* - Object tracking between cameras on live and recorded video.

Where applicable, line item pricing should be provided for each of these features. If these features are stated to be a part of the base bid the vendor will provide these features at no cost to LAPL.

30. VMS Server and Storage System

As an Optional item, the proposed solution should be a turnkey solution where all necessary equipment is provided to ensure the functionality of the video surveillance system. The necessary server(s) hardware required to perform daily activities should be included.

a. System Sizing

The recommended sizing of the Library's provided server's CPU, memory, network interfaces, storage IOPS, storage capacity, etc. is the responsibility of the vendor.

b. System Redundancy

Redundancy shall be incorporated in all server and storage hardware. At a minimum the server should have redundant power supply units and network interface cards. It is required that the server software (hypervisor, operating system and application) drives shall be either mirrored or configured in a RAID-5 for redundancy.

c. Server and Storage System Expansion / Growth

The specifications for servers / storage units will be required to accommodate all existing cameras. Please see **Appendix F** for estimated counts, storage sizing based on recording parameters.

In addition to the counts provided in **Appendix F**, the server and storage specifications must be sized to accommodate an additional **15% growth in camera count** (i.e., if the proposed solution requires 400 cameras and spans across 6 servers, the provided server hardware must have the capacity (CPU and RAM) to accommodate a total of 460 cameras (400×1.15)). Similarly, the storage system must include the additional capacity included to support the identified growth percentage (e.g., if the storage requirement for the 400 cameras to archive 31 days of archived video calculates to 24TB, the proposed storage system must include 27.6TB (24×1.15) of useable space for the video footage).

As the future needs of the video surveillance system increases, solutions that allow the increase the system capacity without any loss of investments will be preferred (i.e., a modular server/storage system to which additional capacities can be added at a later date).

The specifications must be sized to accommodate the quantity of cameras specified in Appendix F. The camera count growth is based on the highest resolution and performance requirement.

d. Hypervisor and Operating System

If the proposed solution operates in a virtual server environment requiring commercial hypervisor, the cost to provide the hypervisor and operating system must be included in the cost of your proposal. The costs for the hypervisor and operating systems.

LAPL will provide the necessary hypervisor and/or operating system under their current enterprise agreements. The Library has standardized on the use of Windows Server 2012 for the operating system.

e. Video Storage System

A storage system will be provided by LAPL. Vendors shall note any concerns

with the sizing of the LAPL storage environment and provide pricing for any other components necessary for a complete solution.

f. LAPL -Provided Server / Storage

The LAPL provided equipment will meet or exceed the specifications provided by the Vendor.

The Vendor may include the server and storage hardware as a part of the optional costs in Appendix F.

g. Rackmount Systems

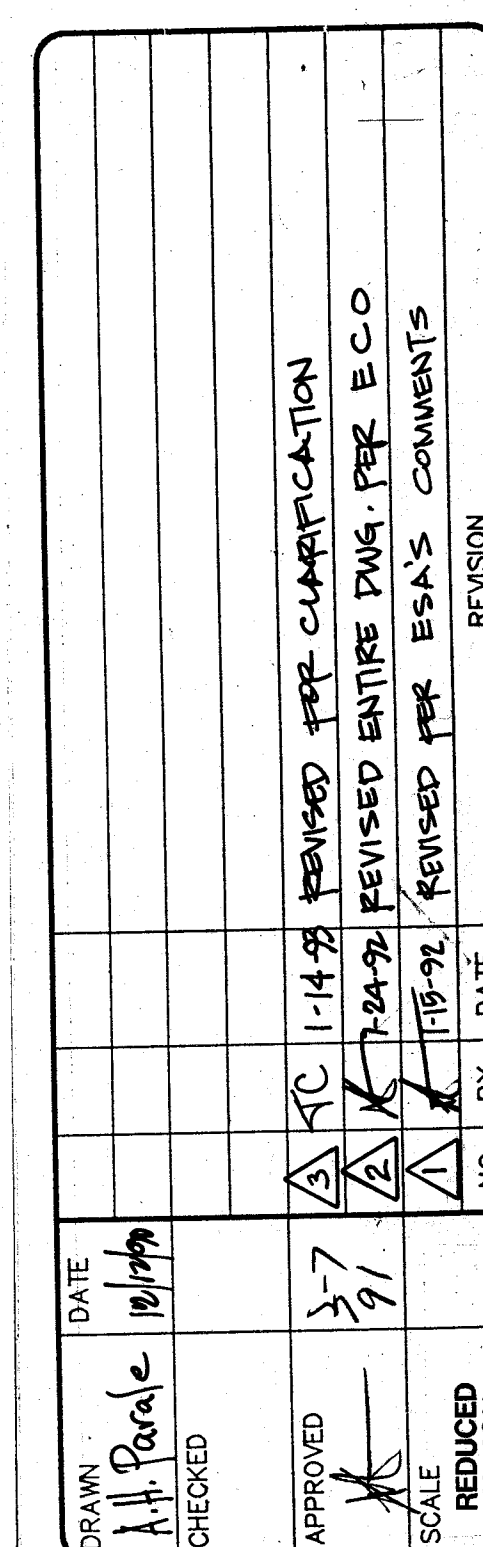
A rack mountable server and system is required. The equipment will be installed in a LAPL provided rack. The equipment must have slide out rails to be installed in a 36" deep rack.

h. KVM System

If multiple servers are proposed the vendor is NOT required to provide a KVM solution as a part of the base bid. However, as an option, unit pricing for the KVM is requested.

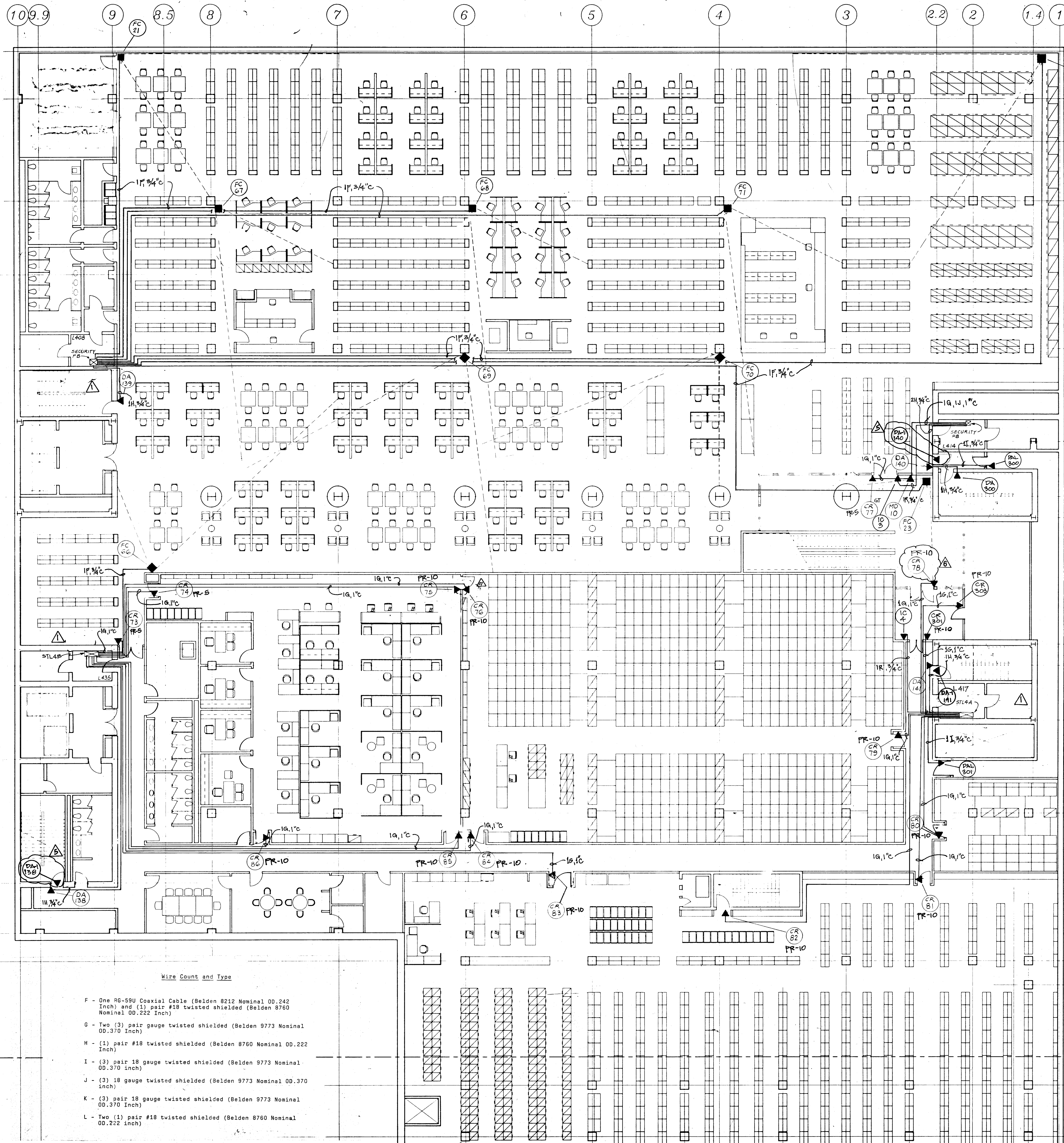
i. UPS System

The server and storage systems will connect to a Library-provided UPS system where applicable.



SITE PLAN SECURITY SYSTEM

SHEET NO.
7942-02-01
(SEC - 101)
PROJECT
L.A. LIBRARY



- Wire Count and Type
- F - One RG-59U Coaxial Cable (Belden 8212 Nominal 00.242 inch) and (1) pair #18 twisted shielded (Belden 8760 Nominal 00.222 inch)
 - G - Two (3) pair gauge twisted shielded (Belden 9773 Nominal 00.370 inch)
 - H - (1) pair #18 twisted shielded (Belden 8760 Nominal 00.222 inch)
 - I - (3) pair 18 gauge twisted shielded (Belden 9773 Nominal 00.370 inch)
 - J - (3) 18 gauge twisted shielded (Belden 9773 Nominal 00.370 inch)
 - K - (3) pair 18 gauge twisted shielded (Belden 9773 Nominal 00.370 inch)
 - L - Two (1) pair #18 twisted shielded (Belden 8760 Nominal 00.222 inch)

MATCH LINE

AS BUILT

ISSUED BY
THORN
Automated Systems Inc.
21705 Wilshire Ave.
Suite 204/205
Los Angeles, CA 90040
(213) 699-9111

THORN
Automated Systems Inc.
CORPORATE HEADQUARTERS
WESTLAKE, OHIO

DATE: 10/10/90
DRAWN: J. Pale
CHECKED: J. Pale
APPROVED: J. Pale
SCALE: 1/8" = 1'-0"
REDUCED BY 40%

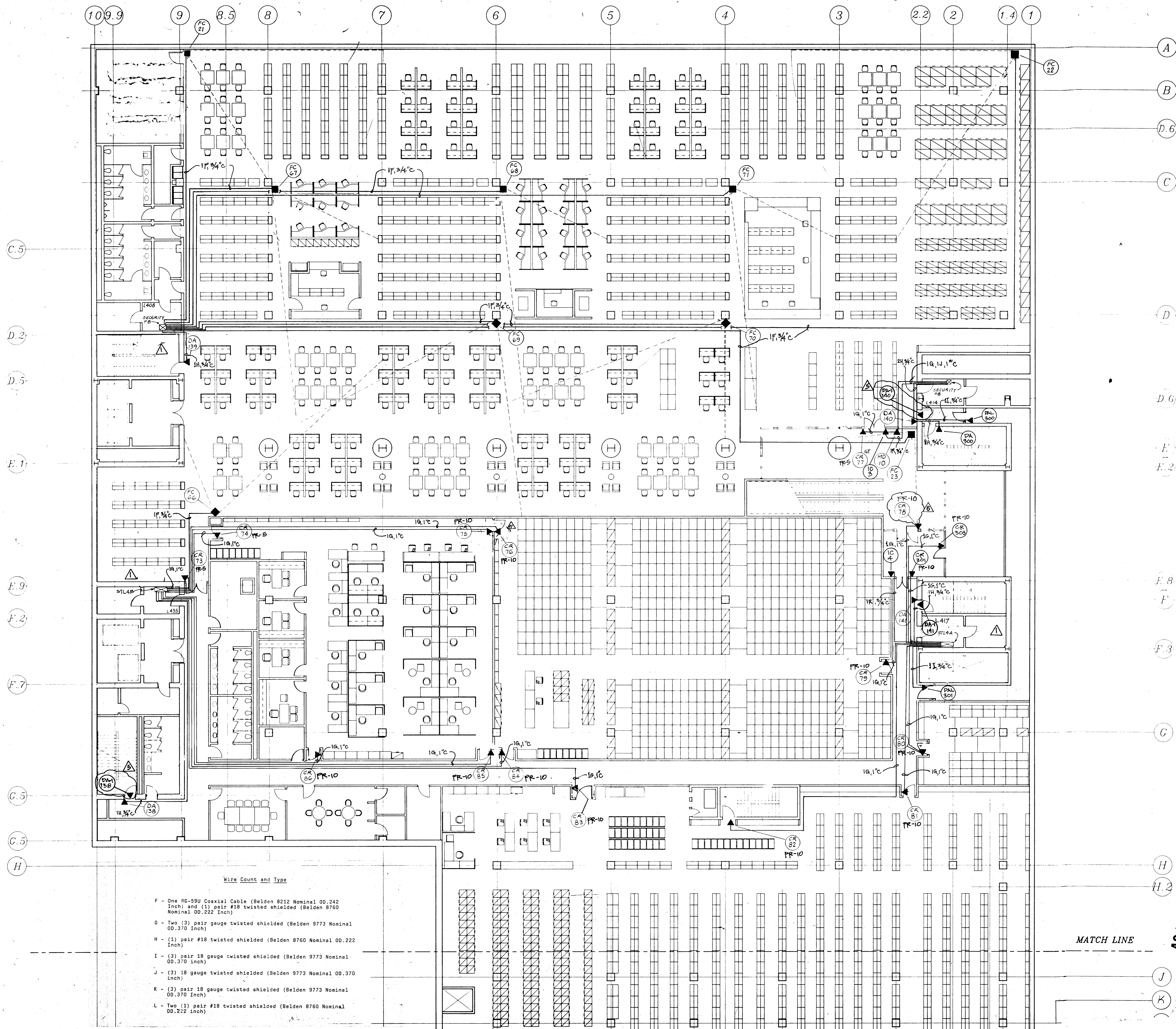
NO.	BY	DATE	REVISION
1	AS-BUILT	11-24-93	REVISED FOR CLARIFICATION
2	AS-BUILT	11-24-93	REVISED FOR CLARIFICATION
3	AS-BUILT	11-24-93	REVISED FOR CLARIFICATION
4	AS-BUILT	11-24-93	REVISED FOR CLARIFICATION
5	AS-BUILT	11-24-93	REVISED FOR CLARIFICATION
6	AS-BUILT	11-24-93	REVISED FOR CLARIFICATION
7	AS-BUILT	11-24-93	REVISED FOR CLARIFICATION
8	AS-BUILT	11-24-93	REVISED FOR CLARIFICATION
9	AS-BUILT	11-24-93	REVISED FOR CLARIFICATION
10	AS-BUILT	11-24-93	REVISED FOR CLARIFICATION
11	AS-BUILT	11-24-93	REVISED FOR CLARIFICATION
12	AS-BUILT	11-24-93	REVISED FOR CLARIFICATION
13	AS-BUILT	11-24-93	REVISED FOR CLARIFICATION
14	AS-BUILT	11-24-93	REVISED FOR CLARIFICATION
15	AS-BUILT	11-24-93	REVISED FOR CLARIFICATION
16	AS-BUILT	11-24-93	REVISED FOR CLARIFICATION
17	AS-BUILT	11-24-93	REVISED FOR CLARIFICATION
18	AS-BUILT	11-24-93	REVISED FOR CLARIFICATION
19	AS-BUILT	11-24-93	REVISED FOR CLARIFICATION
20	AS-BUILT	11-24-93	REVISED FOR CLARIFICATION
21	AS-BUILT	11-24-93	REVISED FOR CLARIFICATION
22	AS-BUILT	11-24-93	REVISED FOR CLARIFICATION
23	AS-BUILT	11-24-93	REVISED FOR CLARIFICATION
24	AS-BUILT	11-24-93	REVISED FOR CLARIFICATION
25	AS-BUILT	11-24-93	REVISED FOR CLARIFICATION
26	AS-BUILT	11-24-93	REVISED FOR CLARIFICATION
27	AS-BUILT	11-24-93	REVISED FOR CLARIFICATION
28	AS-BUILT	11-24-93	REVISED FOR CLARIFICATION
29	AS-BUILT	11-24-93	REVISED FOR CLARIFICATION
30	AS-BUILT	11-24-93	REVISED FOR CLARIFICATION
31	AS-BUILT	11-24-93	REVISED FOR CLARIFICATION
32	AS-BUILT	11-24-93	REVISED FOR CLARIFICATION
33	AS-BUILT	11-24-93	REVISED FOR CLARIFICATION
34	AS-BUILT	11-24-93	REVISED FOR CLARIFICATION
35	AS-BUILT	11-24-93	REVISED FOR CLARIFICATION
36	AS-BUILT	11-24-93	REVISED FOR CLARIFICATION
37	AS-BUILT	11-24-93	REVISED FOR CLARIFICATION
38	AS-BUILT	11-24-93	REVISED FOR CLARIFICATION
39	AS-BUILT	11-24-93	REVISED FOR CLARIFICATION
40	AS-BUILT	11-24-93	REVISED FOR CLARIFICATION
41	AS-BUILT	11-24-93	REVISED FOR CLARIFICATION
42	AS-BUILT	11-24-93	REVISED FOR CLARIFICATION
43	AS-BUILT	11-24-93	REVISED FOR CLARIFICATION
44	AS-BUILT	11-24-93	REVISED FOR CLARIFICATION
45	AS-BUILT	11-24-93	REVISED FOR CLARIFICATION
46	AS-BUILT	11-24-93	REVISED FOR CLARIFICATION
47	AS-BUILT	11-24-93	REVISED FOR CLARIFICATION
48	AS-BUILT	11-24-93	REVISED FOR CLARIFICATION
49	AS-BUILT	11-24-93	REVISED FOR CLARIFICATION
50	AS-BUILT	11-24-93	REVISED FOR CLARIFICATION
51	AS-BUILT	11-24-93	REVISED FOR CLARIFICATION
52	AS-BUILT	11-24-93	REVISED FOR CLARIFICATION
53	AS-BUILT	11-24-93	REVISED FOR CLARIFICATION
54	AS-BUILT	11-24-93	REVISED FOR CLARIFICATION
55	AS-BUILT	11-24-93	REVISED FOR CLARIFICATION
56	AS-BUILT	11-24-93	REVISED FOR CLARIFICATION
57	AS-BUILT	11-24-93	REVISED FOR CLARIFICATION
58	AS-BUILT	11-24-93	REVISED FOR CLARIFICATION
59	AS-BUILT	11-24-93	REVISED FOR CLARIFICATION
60	AS-BUILT	11-24-93	REVISED FOR CLARIFICATION
61	AS-BUILT	11-24-93	REVISED FOR CLARIFICATION
62	AS-BUILT	11-24-93	REVISED FOR CLARIFICATION
63	AS-BUILT	11-24-93	REVISED FOR CLARIFICATION
64	AS-BUILT	11-24-93	REVISED FOR CLARIFICATION
65	AS-BUILT	11-24-93	REVISED FOR CLARIFICATION
66	AS-BUILT	11-24-93	REVISED FOR CLARIFICATION
67	AS-BUILT	11-24-93	REVISED FOR CLARIFICATION
68	AS-BUILT	11-24-93	REVISED FOR CLARIFICATION
69	AS-BUILT	11-24-93	REVISED FOR CLARIFICATION
70	AS-BUILT	11-24-93	REVISED FOR CLARIFICATION
71	AS-BUILT	11-24-93	REVISED FOR CLARIFICATION
72	AS-BUILT	11-24-93	REVISED FOR CLARIFICATION
73	AS-BUILT	11-24-93	REVISED FOR CLARIFICATION
74	AS-BUILT	11-24-93	REVISED FOR CLARIFICATION
75	AS-BUILT	11-24-93	REVISED FOR CLARIFICATION
76	AS-BUILT	11-24-93	REVISED FOR CLARIFICATION
77	AS-BUILT	11-24-93	REVISED FOR CLARIFICATION
78	AS-BUILT	11-24-93	REVISED FOR CLARIFICATION
79	AS-BUILT	11-24-93	REVISED FOR CLARIFICATION
80	AS-BUILT	11-24-93	REVISED FOR CLARIFICATION
81	AS-BUILT	11-24-93	REVISED FOR CLARIFICATION
82	AS-BUILT	11-24-93	REVISED FOR CLARIFICATION
83	AS-BUILT	11-24-93	REVISED FOR CLARIFICATION
84	AS-BUILT	11-24-93	REVISED FOR CLARIFICATION
85	AS-BUILT	11-24-93	REVISED FOR CLARIFICATION
86	AS-BUILT	11-24-93	REVISED FOR CLARIFICATION
87	AS-BUILT	11-24-93	REVISED FOR CLARIFICATION
88	AS-BUILT	11-24-93	REVISED FOR CLARIFICATION
89	AS-BUILT	11-24-93	REVISED FOR CLARIFICATION
90	AS-BUILT	11-24-93	REVISED FOR CLARIFICATION
91	AS-BUILT	11-24-93	REVISED FOR CLARIFICATION
92	AS-BUILT	11-24-93	REVISED FOR CLARIFICATION
93	AS-BUILT	11-24-93	REVISED FOR CLARIFICATION
94	AS-BUILT	11-24-93	REVISED FOR CLARIFICATION
95	AS-BUILT	11-24-93	REVISED FOR CLARIFICATION
96	AS-BUILT	11-24-93	REVISED FOR CLARIFICATION
97	AS-BUILT	11-24-93	REVISED FOR CLARIFICATION
98	AS-BUILT	11-24-93	REVISED FOR CLARIFICATION
99	AS-BUILT	11-24-93	REVISED FOR CLARIFICATION
100	AS-BUILT	11-24-93	REVISED FOR CLARIFICATION

TITLE: LOWER LEVEL FOUR PLAN - E W
SECURITY SYSTEM

SHEET NO. 7942-02-02
(SEC - 201)
PROJECT: L.A. LIBRARY

LOS ANGELES CENTRAL LIBRARY
LOS ANGELES, CALIFORNIA

LOS ANGELES CENTRAL LIBRARY
LOS ANGELES, CALIFORNIA



MATCH LINE

AS BUILT

**LOWER LEVEL FOUR PLAN - E W
SECURITY SYSTEM**

LOS ANGELES CENTRAL LIBRARY
LOS ANGELES CALIFORNIA

SHEET NO.
7942-02-02
(SEC - 201)
PROJECT
L.A. LIBRARY

DATE	BY	REMARKS	REVISION	REVISION DATE	REVISION BY	REVISION REASON
11/16/90	A.H. Parke	CHECKED	1-25	11-24-90	AS-BUILT	REVISED FOR CLARIFICATION
			41	11-23-90		REVISED ENTIRE PNG. PER PCO
		APPROVED	1-25	11-20-90		REVISED ENTIRE PNG. PER PCO
			41	11-19-90		REVISED ENTIRE PNG. PER PCO
		SCALE -		11-19-90		REVISED PER ESA'S COMMENTS
		REDUCED				

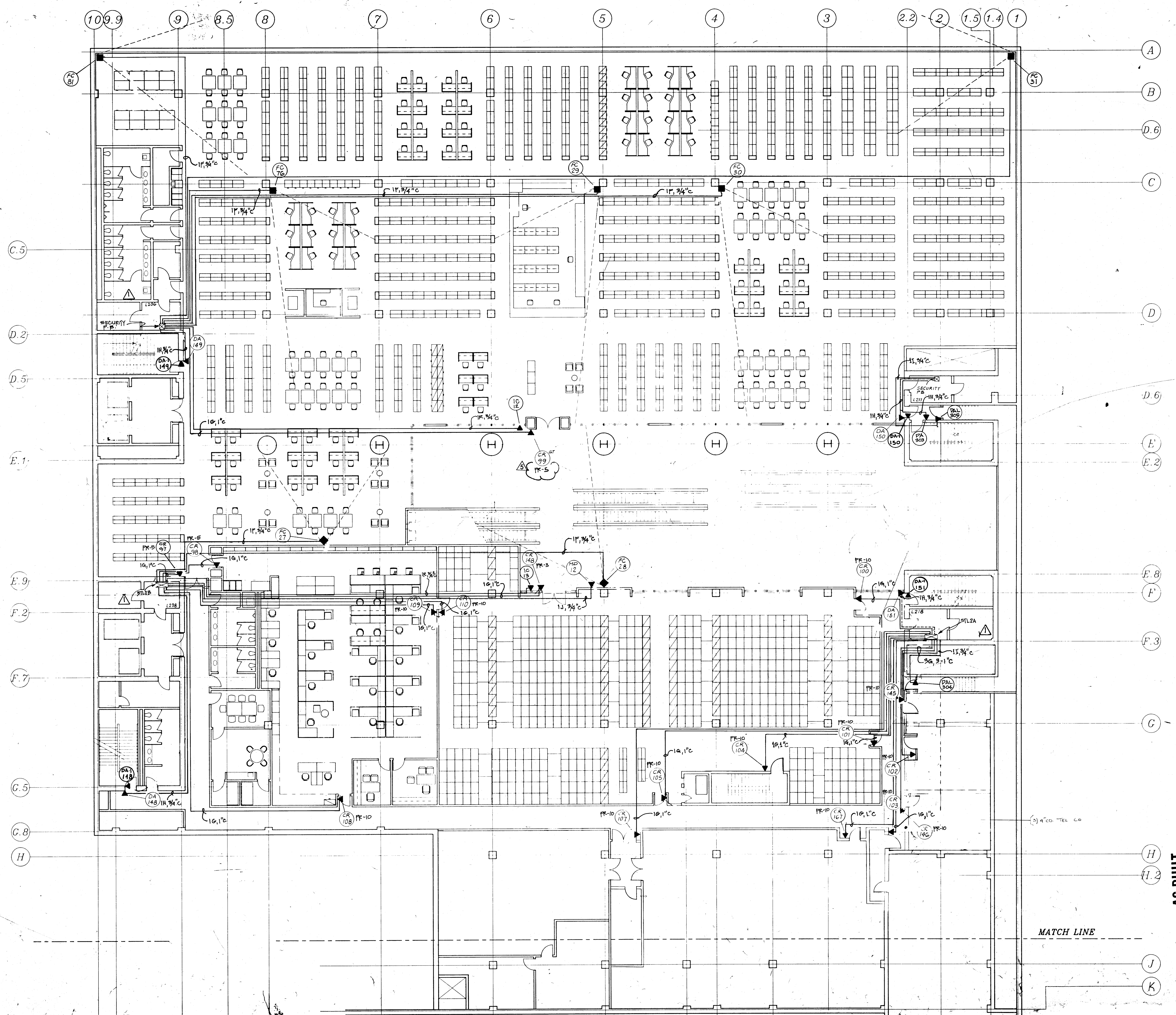
24 of 424.1
31.1
429

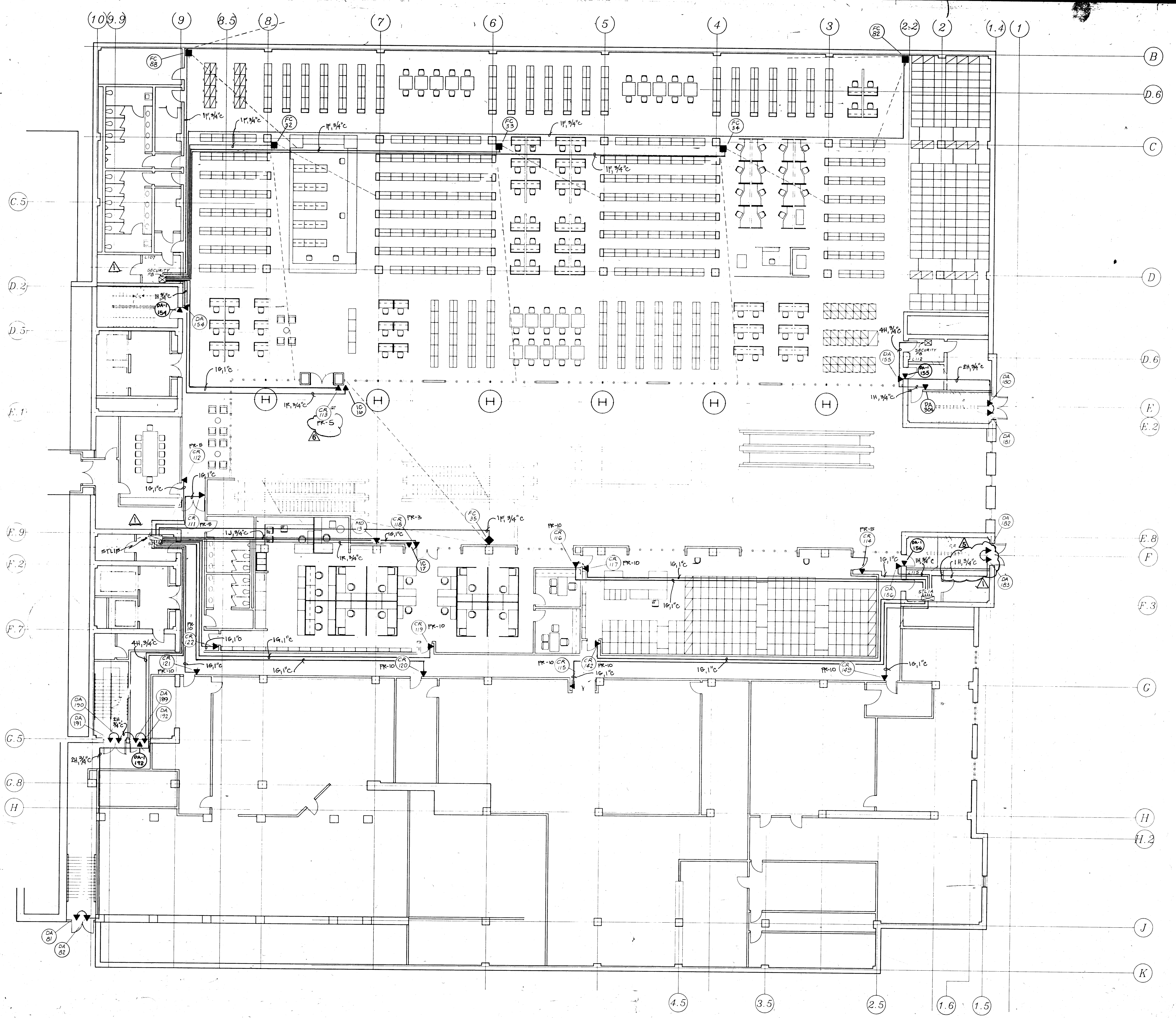
THORN
Automated Systems Inc.

ISSUED BY

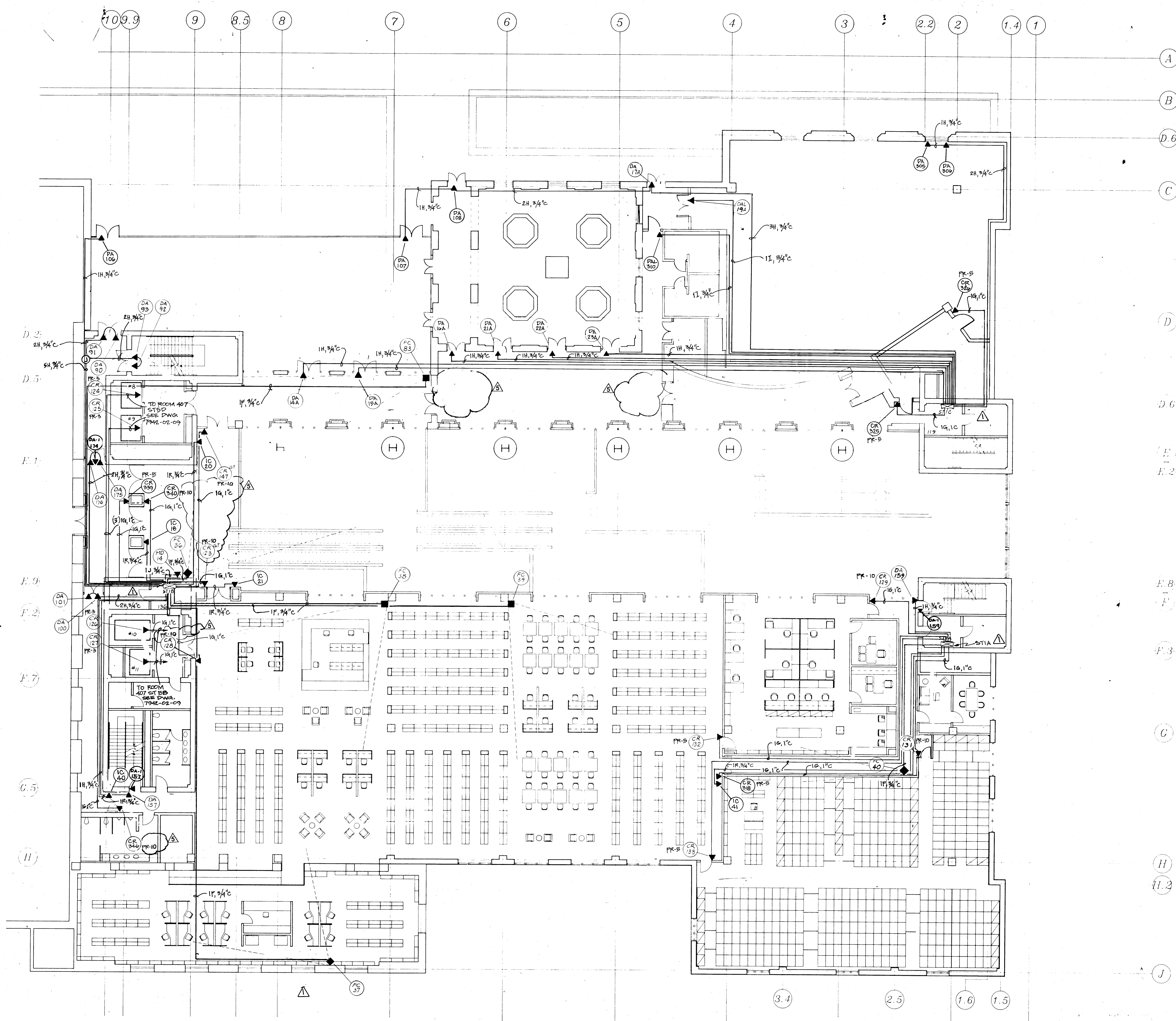
THORN
Automated Systems, Inc.

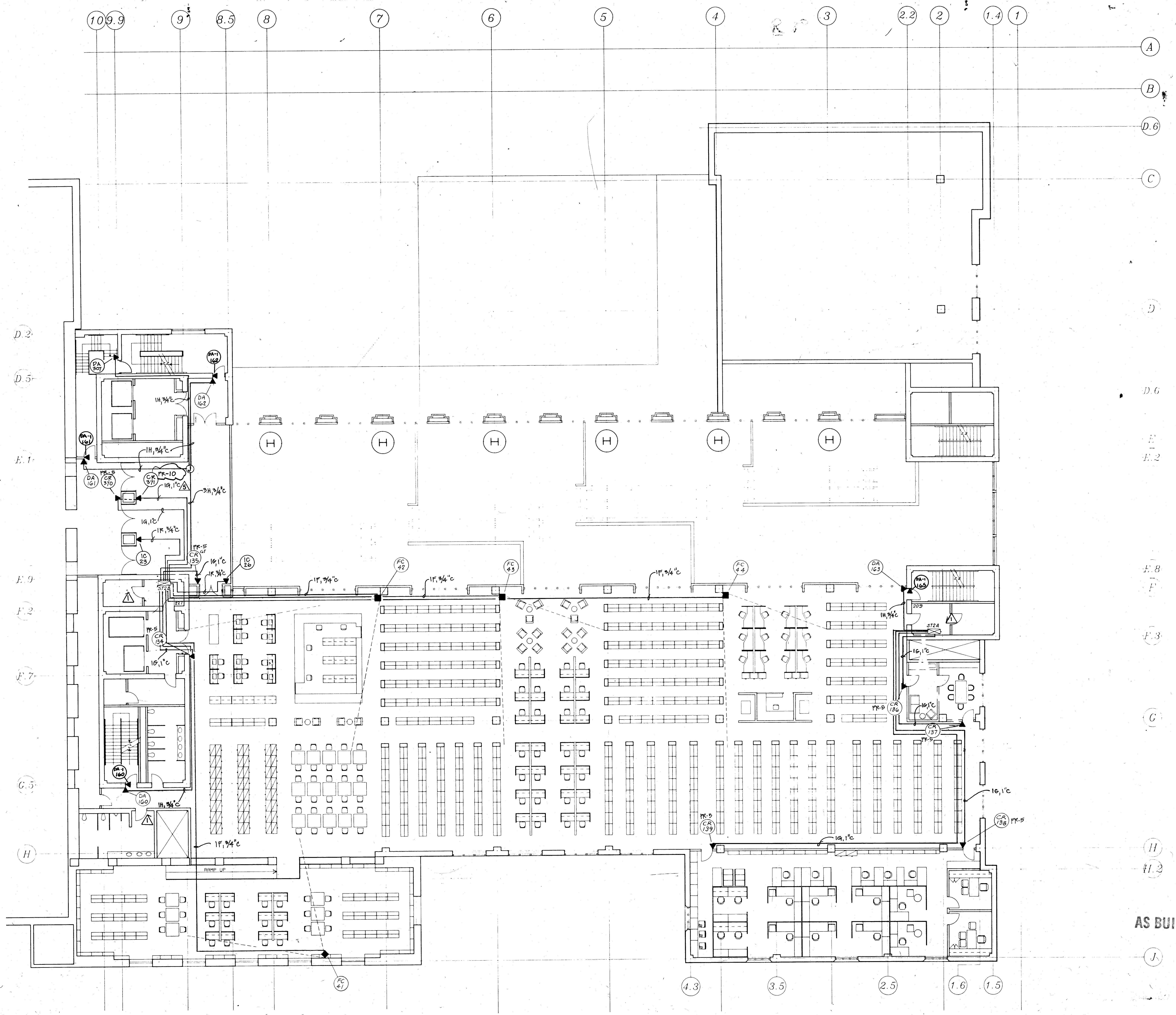
21720 S. Wilmington Ave.
Suite 304/305
Long Beach, CA 90810





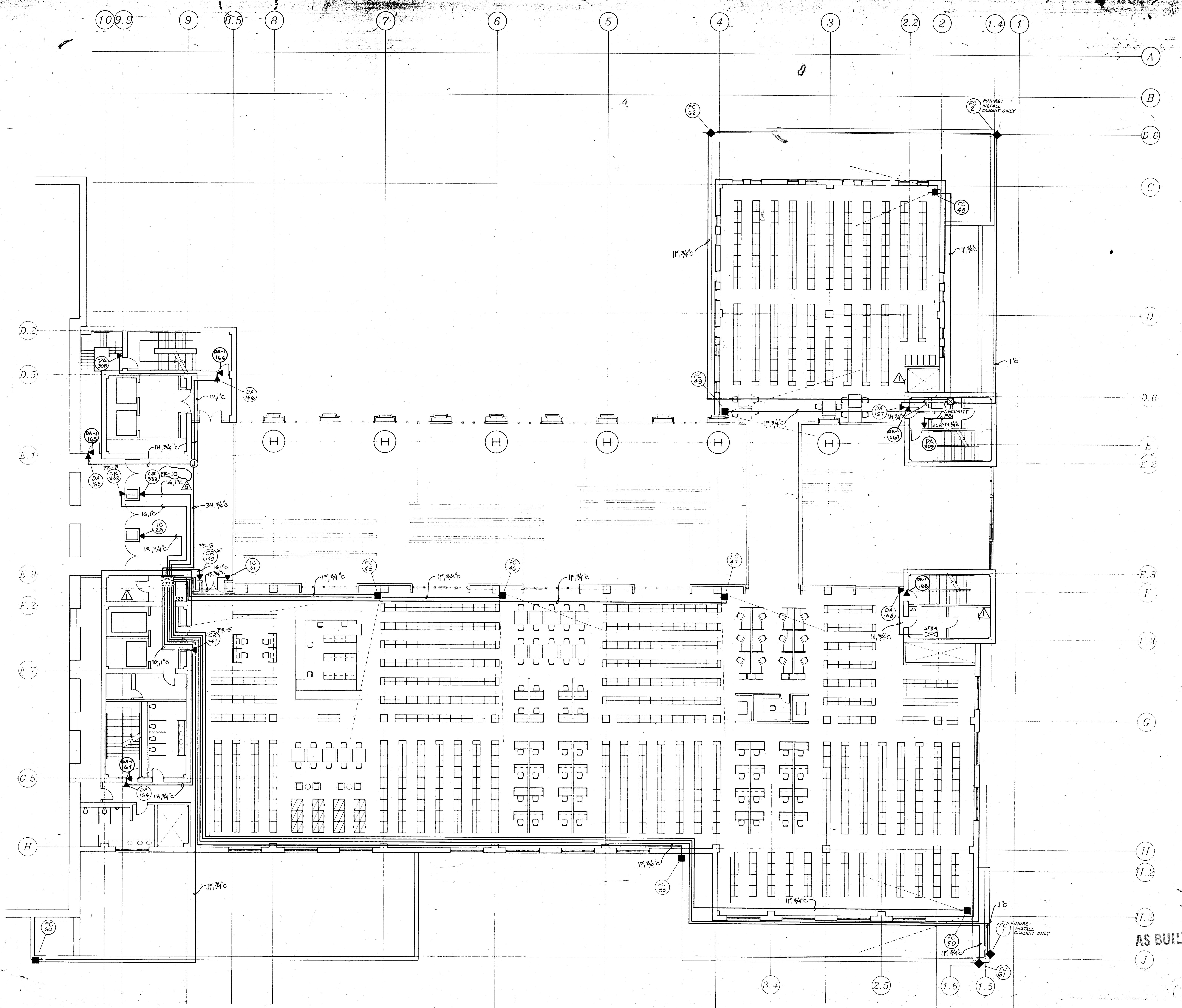
AS BUILT
10/14/14



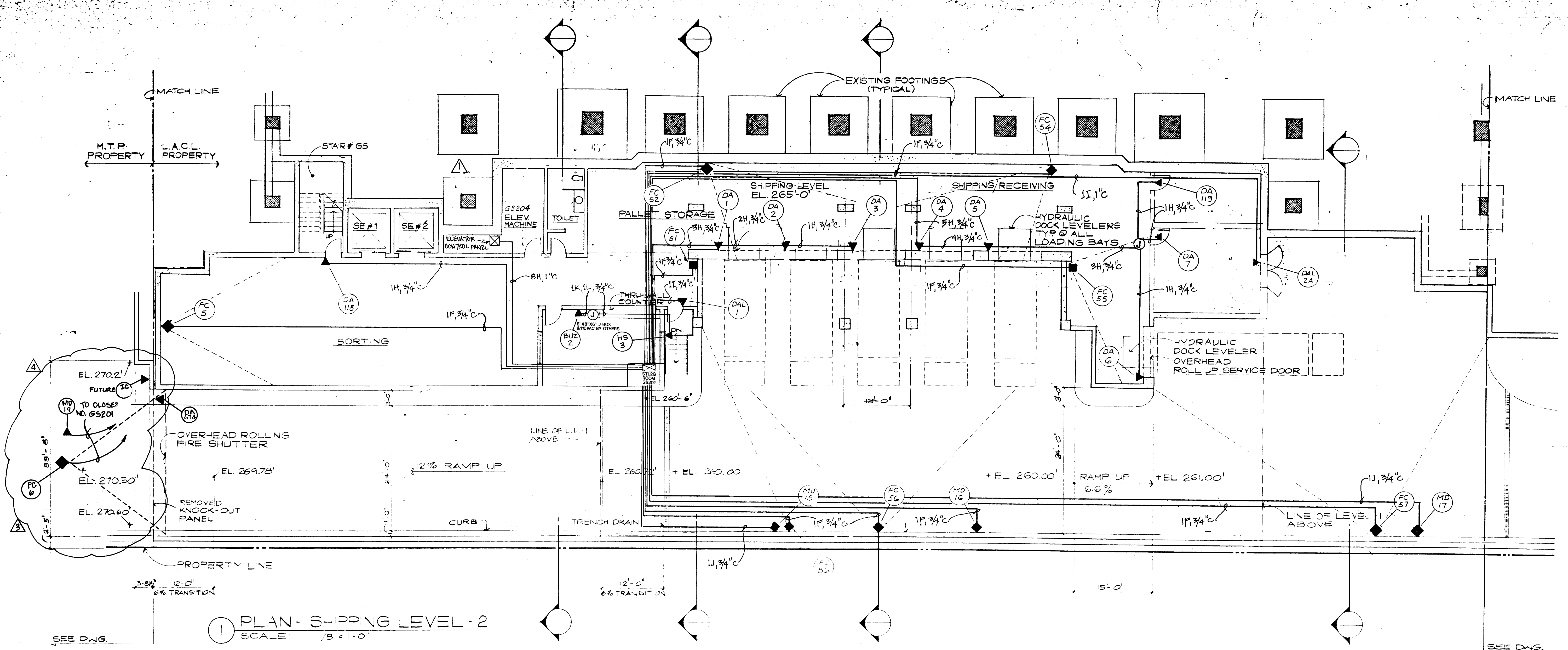


AS BUILT

Handwritten signature
10/10/10

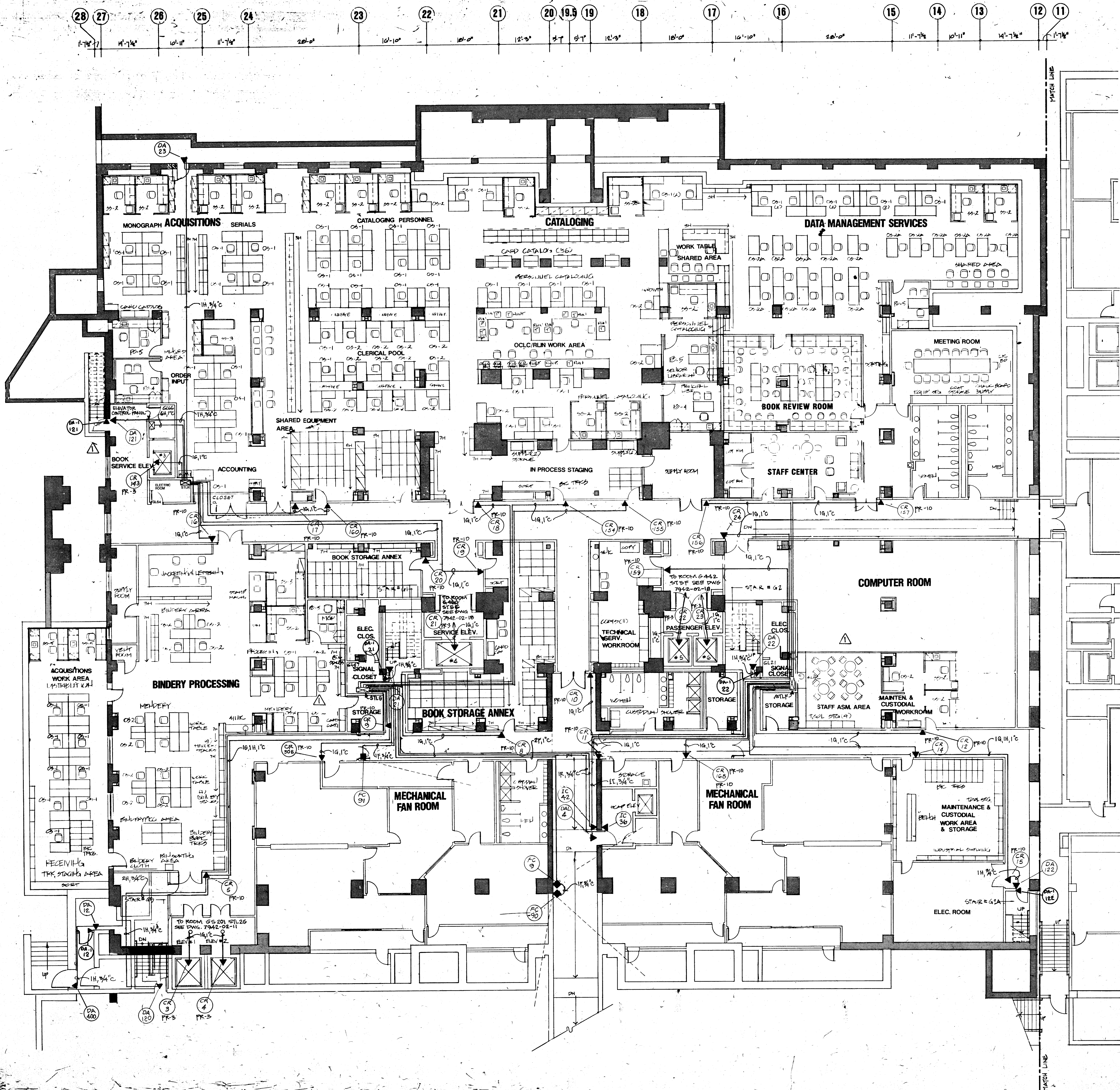


AS BUILT



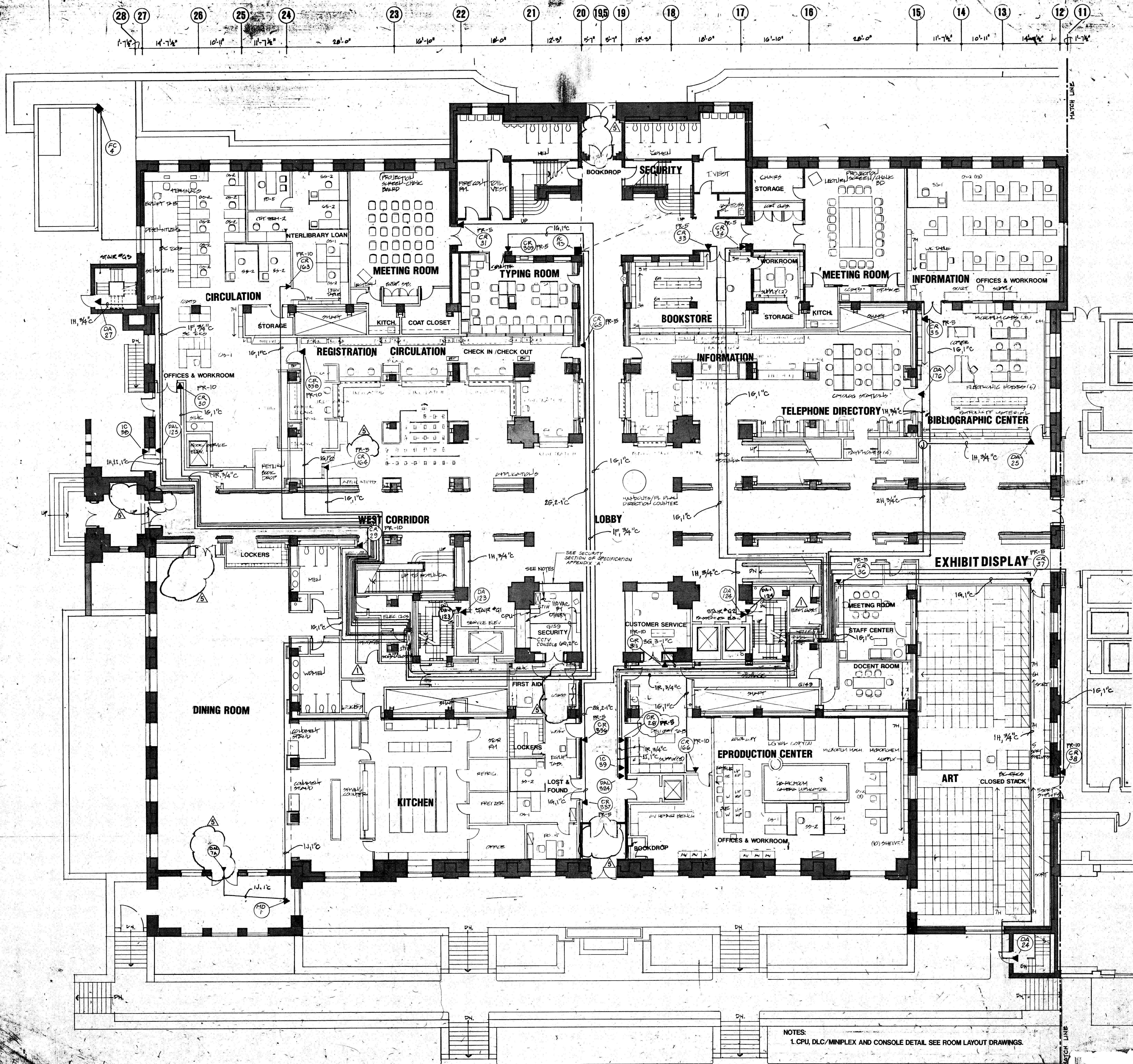
AS BUILT

Paul K. O'Connell



NO.	ROOM NAME
GL01	ACQUISITIONS
GL02	CATALOGING
GL03	IN PROCESS STAGING
GL04	SUPPLY ROOM
GL05	OFFICE
GL06	OFFICE
GL07	DATA MGMT SERVICES
GL08	MEETING ROOM
GL09	COT ROOM
GL10	COT ROOM
GL11	BOOK REVIEW ROOM
GL12	STAFF CENTER
GL13	OFFICE
GL14	MEETING ROOM
GL15	CORRIDOR
GL16	WOMEN'S TOILET
GL17	MEN'S TOILET
GL18	CORRIDOR
GL19	COMPUTER ROOM
GL20	ELECTRICAL CLOSET
GL21	SIGNAL CLOSET
GL22	MAINT/CUSTODIAL OFFICES
GL23	CORRIDOR
GL24	CUSTODIAL STORAGE
GL25	CORRIDOR
GL26	ELECTRIC ROOM
GL27	FAN ROOM
GL28	FAN ROOM
GL29	FAN ROOM
GL30	FAN ROOM
GL31	ELEVATOR MACHINE ROOM
GL32	MECHANICAL ROOM
GL33	ELEVATOR VESTIBULE
GL34	JANITOR CLOSET
GL35	CORRIDOR
GL36	WOMEN CUSTODIAN SHOWERS
GL37	STORAGE
GL38	ELEVATOR VESTIBULE
GL39	TECH. SERVICES WORKROOM
GL40	CORRIDOR
GL41	TUNNEL
GL42	CORRIDOR
GL43	BOOK STORAGE ANNEX
GL44	ELEVATOR VESTIBULE
GL45	BOOK STORAGE ANNEX
GL46	ELECTRICAL CLOSET
GL47	SIGNAL CLOSET
GL48	STORAGE
GL49	MEN CUSTODIAN SHOWERS
GL50	FAN ROOM
GL51	MECHANICAL ROOM
GL52	FAN ROOM
GL53	FAN ROOM
GL54	FAN ROOM
GL55	CORRIDOR
GL56	ELEVATOR VESTIBULE
GL57	CORRIDOR
GL58	BINDERY PROCESSING
GL59	OFFICE
GL60	ACQUISITIONS WORK AREA
GL61	VENT ROOM
GL62	SUPPLY ROOM
GL63	CORRIDOR
GL64	ELECTRICAL CLOSET
GL65	CORRIDOR
GL66	ELEVATOR MACHINE ROOM
GL67	OFFICE
GL68	OFFICE

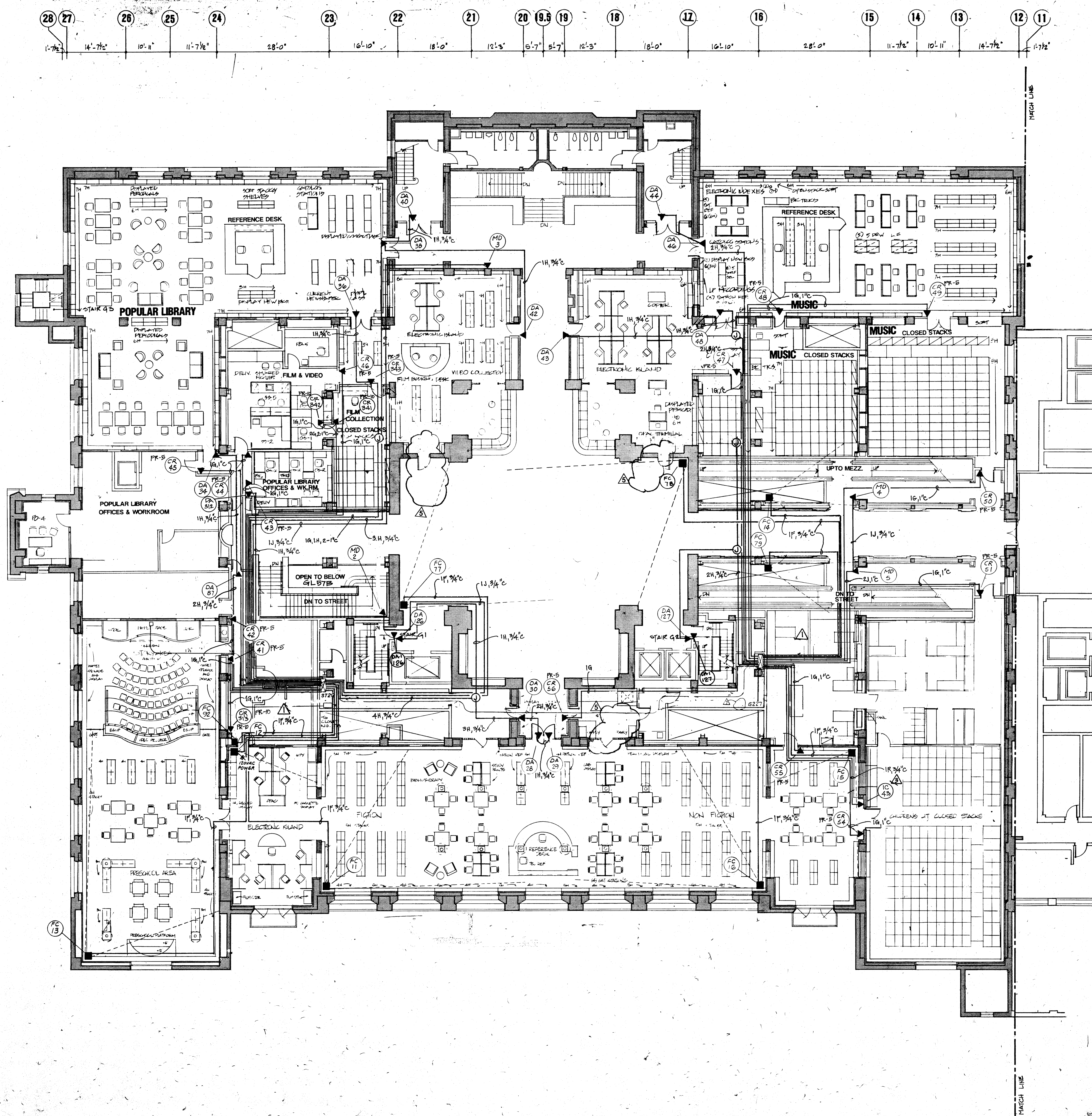
AS BUILT



NOTES:
1. CPU, DLC/MINIPLEX AND CONSOLE DETAIL SEE ROOM LAYOUT DRAWINGS.

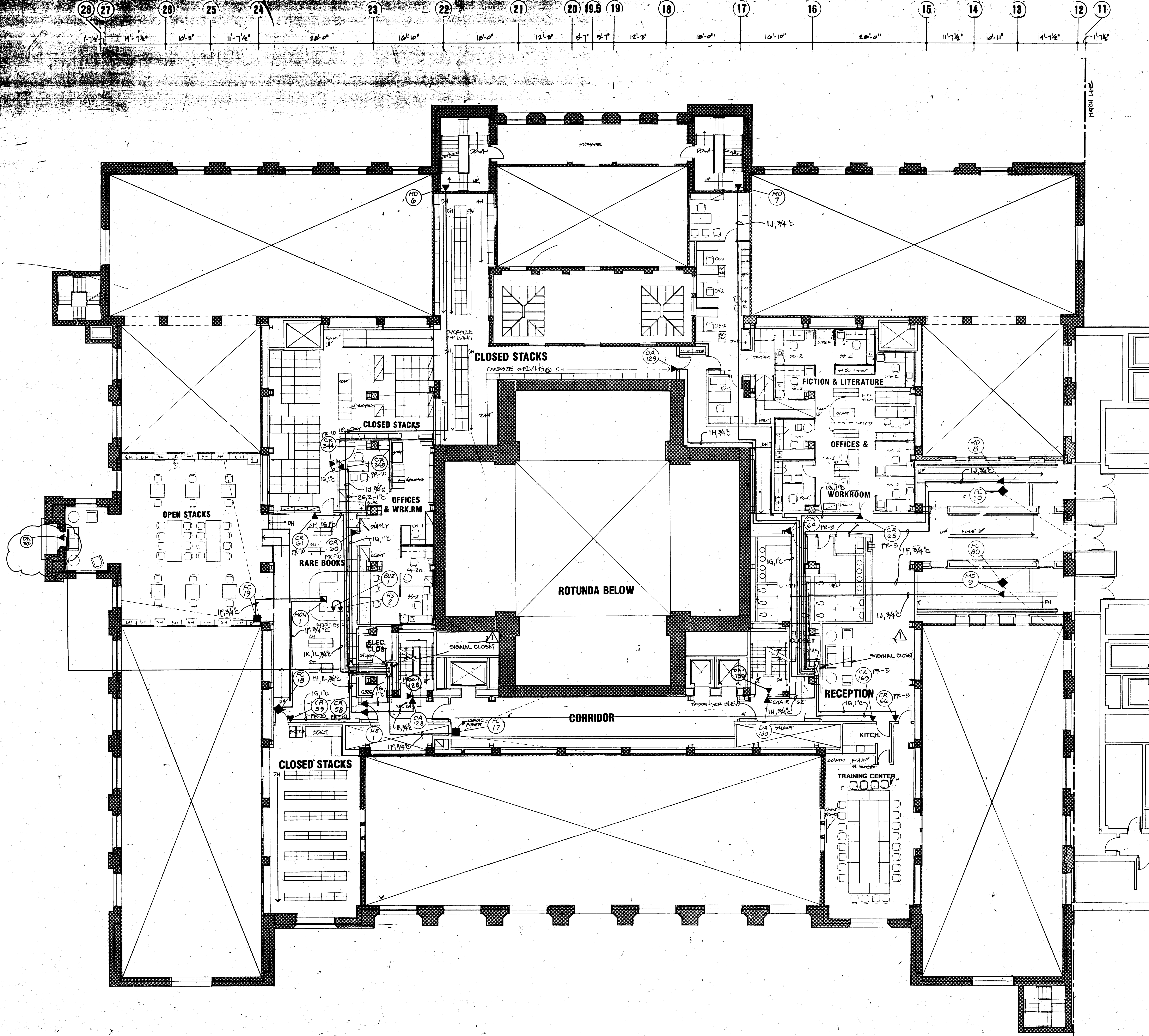
AS BUILT

NO.	ROOM NAME
G101	CIRCULATION OFFICE
G102	STORAGE
G103	CIRCULATION WORKROOM
G104	VESTIBULE
G105	SECURITY
G106	BOOK DROP
G107	CIRCULATION LOBBY
G108	CIRCULATION
G109	INTERLIBRARY LOAN
G110	OFFICE
G111	MEETING ROOM
G112	KITCHENETTE
G113	CLOSET
G114	TYPING
G115	FIRE CONTROL ROOM
G116	VESTIBULE
G117	MEN'S TOILET
G118	VESTIBULE
G119	BOOK DROP
G120	SECURITY
G121	WOMEN'S TOILET
G122	VESTIBULE
G123	JANITOR'S CLOSET
G124	VESTIBULE
G125	NORTH STAIR HALL
G126	NORTH CORRIDOR
G127	BOOKSTORE
G128	INFORMATION
G129	ESCALATOR/TELEPHONE
G130	TELEPHONE DIRECTORY
G131	STORAGE
G132	WORKROOM
G133	VESTIBULE
G134	STORAGE
G135	MEETING ROOM
G136	STORAGE
G136A	KITCHENETTE
G136B	STORAGE
G137	INTERMEDIATE WORKROOM
G138	BIBLIOGRAPHIC CENTER
G139	EXHIBIT/DISPLAY
G140	EAST CORRIDOR
G141	EXHIBIT/DISPLAY
G142	CLOSET STACK - ART
G143	STORAGE
G144	DOCENT ROOM
G145	DARK ROOM
G146	MEETING ROOM
G147	STORAGE
G148	ELECTRICAL CLOSET
G149	SIGNAL CLOSET
G149A	CORRIDOR
G150	ELEVATOR VESTIBULE
G151	ESCALATOR/TELEPHONE
G152	CUSTOMER SERVICE
G153	REPRODUCTION CENTER
G154	STORAGE
G155	BOOK DROP
G156	ELEVATOR VESTIBULE
G157	SOUTH VESTIBULE
G158	SOUTH CORRIDOR
G159	SECURITY
G160	FIRST AID
G161	LOCKER ROOM
G162	OFFICE
G163	OFFICE
G164	
G165	
G166	
G167	
G168	KITCHEN - FUTURE
G169	CORRIDOR
G170	CORRIDOR
G171	ELEVATOR VESTIBULE
G172	ELEVATOR
G173	VESTIBULE
G174	ELECTRICAL CLOSET
G175	SIGNAL CLOSET
G176	STORAGE
G177	LOCKER ROOM
G178	WOMEN'S TOILET
G179	VESTIBULE
G180	MEN'S TOILET
G181	FUTURE DINING ROOM
G182	LOCKERS
G183	WEST VESTIBULE
G184	WEST CORRIDOR
G185	CENTRAL LOBBY
G186	WEST STAIR

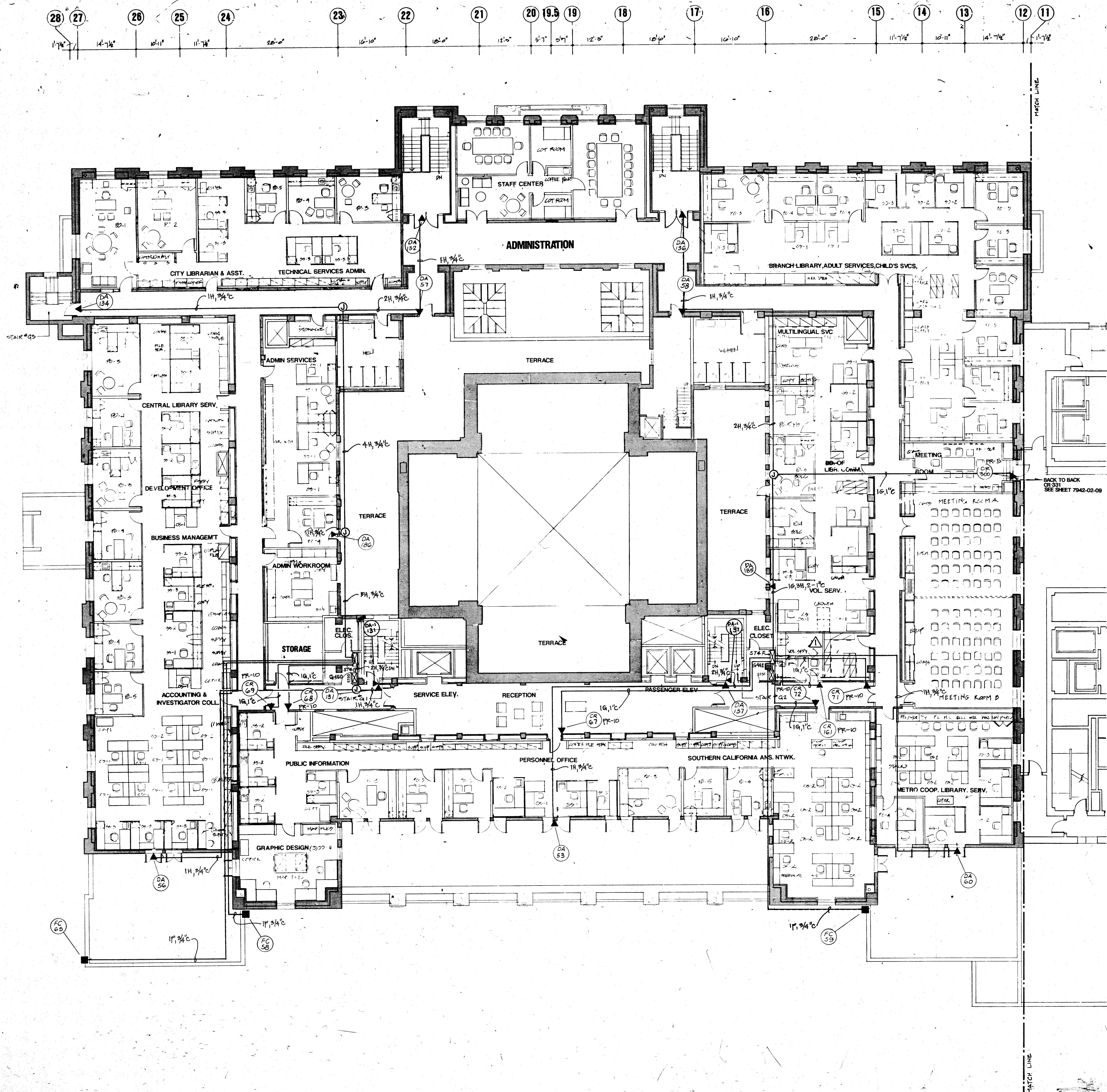


NO.	ROOM NAME
201	POPULAR LIBRARY
202	FILM COLLECTION
203	OFFICE
204	FLM & VIDEO OFFICE & WORK
205	FLM & VIDEO
206	NORTH STAIR
207	CLOSET
208	MEN'S TOILET
209	WOMEN'S TOILET
210	JANITOR CLOSET
211	NORTH STAIR
212	NORTH STAIR HALL
213	NORTH CORRIDOR
214	MUSIC ELECTRONIC ISLAND
215	CLOSED STACKS
216	MUSIC
217	CLOSED STACKS
218	EAST CORRIDOR
218A	ESCALATOR/EXHIBIT
218B	ESCALATOR/EXHIBIT
219	CLOSED STACKS
220	NON FICTION
221	NON FICTION ELECTRONIC ISLAND
222	CORRIDOR
223	GIRL'S TOILET
224	BOY'S TOILET
225	STORAGE
226	ELECTRICAL CLOSET
227	SIGNAL CLOSET
228	ELEVATOR VESTIBULE
229	CORRIDOR
230	KITCHEN
231	WORKROOM
232	SOUTH CORRIDOR
233	CHILDREN'S LITERATURE
234	EXHIBIT
235	CORRIDOR
236	ELEVATOR VESTIBULE
237	ELECTRICAL CLOSET
238	SIGNAL CLOSET
239	PICTURE BOOK AREA
240	CHILDREN'S LIT. OFFICE & WORK
241	OFFICE
242	CHILDREN'S LIT. OFFICE & WORK
243	OFFICE
244	CHILDREN'S LIT. OFFICE & WORK
245	CLOSED STACKS
246	CHILDREN'S STORY AREA
247	POPULAR LIB. OFFICE & WORK
248	OFFICE
249	OFFICE
250	POPULAR LIB. OFFICE & WORK
251	VESTIBULE
252	WEST CORRIDOR
253	ROTUNDA
254	WEST STAIR

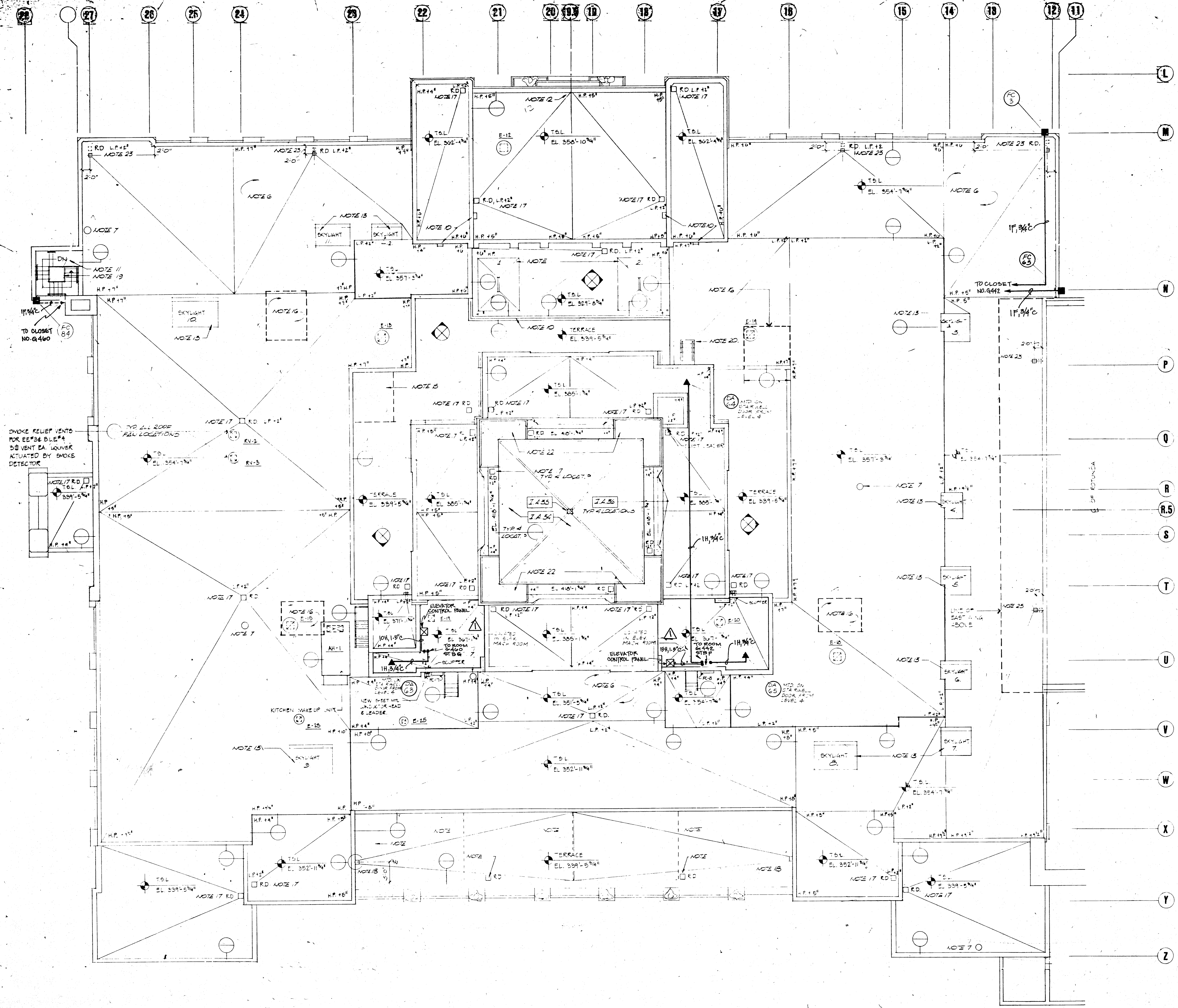
AS BUILT



NO.	ROOM NAME
4301	OFFICE
4302	NORTH STAIR
4303	OFFICE
4304	FICTION & LITERATURE OFFICE
4305	OFFICE
4306	OFFICE
4307	OFFICE
4308	FICTION & LITERATURE OFFICE
4309	CORRIDOR
4310	ESCALATOR
4311	ESCALATOR
4312	CORRIDOR
4313	LANTERN CLOSET
4314	WOMEN'S TOILET
4315	MEN'S TOILET
4316	ELECTRICAL CLOSET
4317	SIGNAL CLOSET
4318	RECEPTION
4319	KITCHENETTE
4320	TRAINING CENTER
4321	CORRIDOR
4322	CORRIDOR
4323	CORRIDOR
4324	CLOSED STACKS
4325	SIGNAL CLOSET
4326	ELECTRICAL CLOSET
4327	REFERENCE DESK - RARE BOOKS
4328	READING ROOM
4329	SEATING AREA
4330	OFFICE
4331	CLOSED STACKS - RARE BOOKS
4332	RARE BOOKS OFFICE
4333	CLOSED STACKS
4334	CLOSED STACKS
4335	NORTH STAIR



NO.	ROOM NAME
4401	OFFICE - CITY LIBRARIAN
4402	OFFICE - ASST. CITY LIBRARIAN
4403	OPEN OFFICE
4404	CORRIDOR
4405	OPEN OFFICE - TECH. SERVICES
4406	OFFICE
4407	OFFICE
4408	OFFICE
4409	NORTH STAIR
4410	CORRIDOR
4411	OT ROOM
4412	KITCHENETTE
4413	OT ROOM
4414	MEETING ROOM
4415	STAFF CENTER LOUNGE
4416	MEETING ROOM
4417	NORTH STAIR
4418	OFFICE
4419	OFFICE
4420	OFFICE
4421	OFFICE
4422	OFFICE
4423	OFFICE
4424	OFFICE
4425	CORRIDOR
4426	STAIR
4427	WOMEN'S TOILET
4428	OFFICE
4429	OPEN OFFICE - MULTILING. SERVICE
4430	BRANCH LIBRARY
4431	OFFICE
4432	OFFICE
4433	OFFICE
4434	OFFICE
4435	OFFICE
4436	OPEN OFFICE - VOLUNTEER SERV.
4437	BOARD ROOM
4438	CORRIDOR
4439	OFFICE
4440	OPEN OFFICE - LIBRARY ASSOC.
4441	ELECTRICAL CLOSET
4442	SIGNAL CLOSET
4443	OPEN OFFICE - METRO COOP. L.S.
4444	OFFICE
4445	OPEN OFFICE - S. CAL. ANSW. N.
4446	CORRIDOR
4447	CORRIDOR
4448	CORRIDOR
4449	CORRIDOR
4450	OFFICE
4451	OFFICE
4452	OFFICE
4453	OFFICE
4454	OFFICE
4455	OPEN OFFICE - PERSONNEL
4456	OPEN OFFICE - PUBLIC INFO.
4457	OFFICE
4458	STORAGE
4459	STORAGE
4460	SIGNAL CLOSET
4461	OFFICE
4462	OPEN OFFICE - ACCOUNTING
4463	STORAGE
4464	ELECTRICAL CLOSET
4465	WORKROOM - ADMINISTRATION
4466	CORRIDOR
4467	OPEN OFFICE - BUS. MGMT.
4468	OFFICE
4469	OFFICE
4470	ADMINISTRATION RECEPTION
4471	OPEN OFFICE - LIBRARY COMM.
4472	OFFICE
4473	OFFICE
4474	OFFICE
4475	OPEN OFFICE - ADMIN. SERV.
4476	MEN'S TOILET
4477	JANITOR'S CLOSET
4478	OPEN OFFICE - CENTRAL LIB. SERV.
4479	OFFICE
4480	OFFICE



- PLAN NOTES:**
- COORDINATE ALL WORK AND SCHEDULING OF WORK WITH THE ADJACENT DEVELOPMENT AND THE STREET WIDENING WORK PROPOSED BY THE CITY.
 - VERIFY ALL EXISTING DIMENSIONS AND FIELD CONDITIONS OF EXISTING SURFACES. PATCH EXISTING SURFACES TO REMAIN, ASSUMING MINIMUM OF 1% OF EXISTING WALL/CILING SURFACES FOR PATCHING.
 - PARTITION TYPES NOTED ON PLAN. EXEMPT CONSTRUCTION REQUIRED FOR VARIOUS TYPES OF ROOMS, I.E. PRIVATE OFFICES, OPEN OFFICES, WORKROOMS, ETC. ONLY "SECURITY ALARM", "HOLD OPEN" AND "CLOSURE" REQUIREMENTS ARE INDICATED WITH "DOOR/FRACTION" TYPES. OTHER HARDWARE REQUIREMENTS FOR ALL NEW DOORS SHALL BE STANDARD AS REQUIRED FOR FUNCTION AND FIRE RATINGS.
 - PROTECT ALL ELEMENTS DURING BUILDING DEMOLITION AND CONSTRUCTION PERIOD. REMOVE PROTECTION AT COMPLETION OF DEMOLITION AND CONSTRUCTION.

AS BUILT



Richard J. Riordan Central Library

630 West Fifth Street, Downtown Los Angeles

Hours

Monday – Thursday

Friday – Saturday

Sundays

Holidays

10 a.m. – 8 p.m.

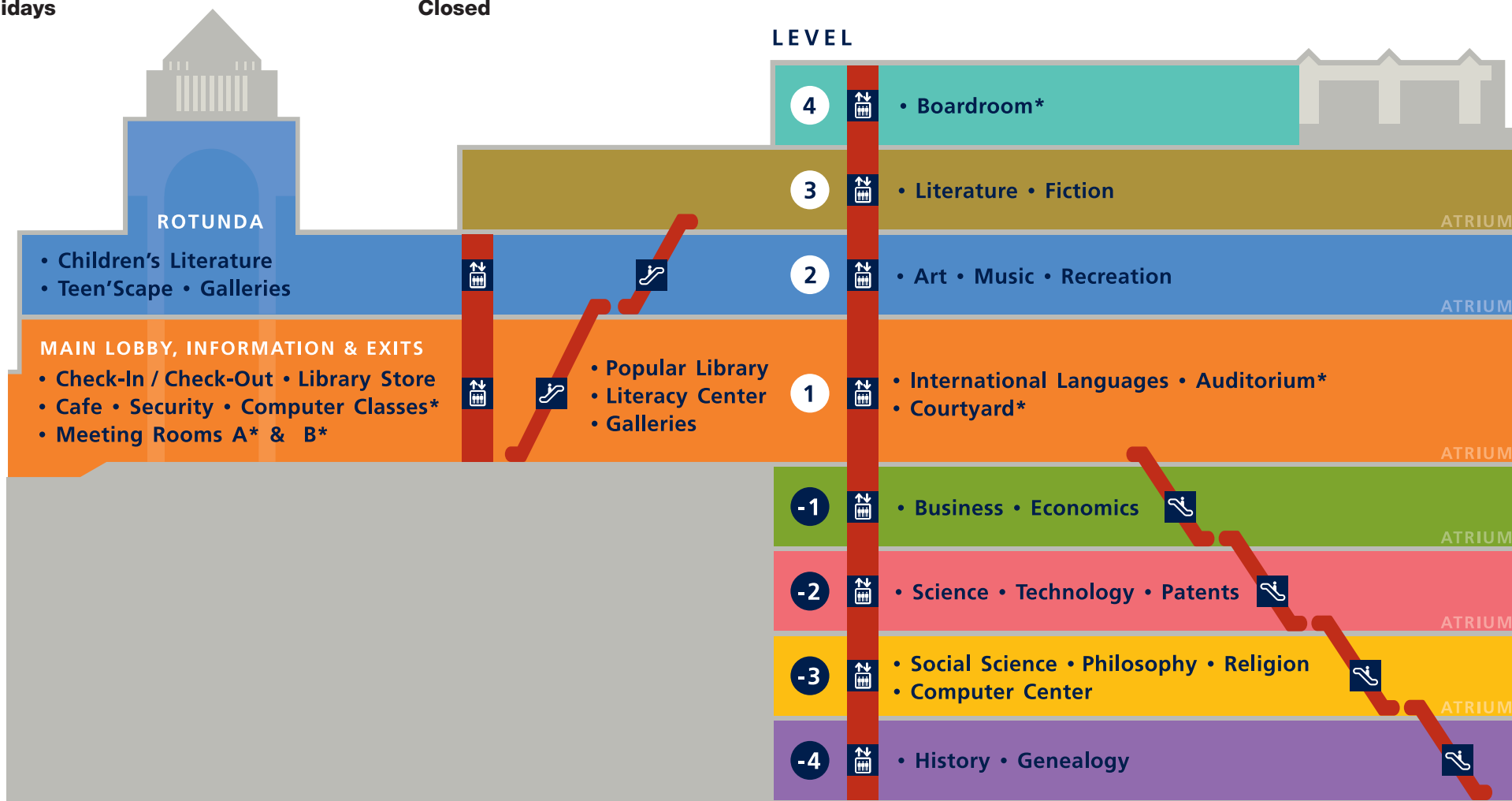
9:30 a.m. – 5:30 p.m.

1 – 5 p.m.

Closed

For more information call 213.228.7000

or go online at www.lapl.org



LEVEL



Guide to finding library materials in the Central Library

First print out the listing from the online catalog for the materials you want. Then locate the call number below to find the Subject Departments where they are shelved. For assistance, please ask staff at any Information Desk.

Call Numbers	Level	Subject Department	Subjects Include
000 - 099	3	Literature • Fiction	Report writing, library science, journalism, general reference works (such as encyclopedias and Guinness World Records)
100 - 399 (except * below)	-3	Social Science • Philosophy • Religion	Test preparation, philosophy, psychology, religions, occult studies, astrology, political science, law, education, etiquette, true crime, parenting
*330 - 334, 336 - 339, 347.1 - 347.4 & 347.7, 368, 380 - 389	-1	Business • Economics	Real estate, investing and personal finance, trade, business law, bankruptcy, insurance, transportation, taxes, communications, labor
400 - 429	3	Literature • Fiction	English grammar, English dictionaries, linguistics
430 - 499	1	International Languages	Books, dictionaries, and grammars for languages other than English as well as language-learning tapes, CDs, videos and DVDs
500 - 649, 660 - 699	-2	Science • Technology • Patents	Mathematics, astronomy, physics, chemistry, biology, animals, computers, medicine, anatomy, exercise, cooking, engineering, patents, auto repair
650 - 659	-1	Business • Economics	Management, resume books, small-business guides, advertising, accounting, word processing
700 - 799	2	Art • Music • Recreation	Fine and applied arts, film studies, photography, music, games, sports, fashion, crafts, ornamental gardening, architecture, orchestral scores
800 - 899	3	Literature • Fiction	Literature and literary criticism, plays and theatre, poetry
900 - 999, 92	-4	History • Genealogy	History, geography, maps, travel guides, genealogy, name books, biographies of presidents, statesmen, world leaders and military figures
x, xz, xz IR, x GN	2	Children's Literature Department	Books, magazines, music CDs, DVDs, and audiobooks for children ages 0-12.
Fiction, M, SF, W, SS, LT	3	Literature • Fiction	Fiction is shelved under the author's name and includes: Mystery (M), Science Fiction (SF), Western (W), Short Stories (SS). All Large Type books (LT) are also found there.
S, CH, K, etc.	1	International Languages	Languages other than English are indicated by a letter before the call number: Spanish (S), Chinese (Ch), Korean (K), etc.
All Call Numbers	1	Popular Library	Bestsellers, popular books, entertainment DVDs and videos, music CDs and audio books
	2	Teen'Scape	Books, test preparation, college, and career guides, DVDs, and audiobooks for teens.

AUD & CD (Audio Books); **VID** (Videos); **DVDs**; magazine and periodicals are found in every department with other materials relating to the subject. All **biographies** are found in their respective subject departments.

Central / Regions	# of Branches	Central Floors/Branches	Est. Qty - Security Camera	Est. Qty - Access Control	Network Video Recorder Needed?	Network Switch Ports Needed	Comments
Central		1st Floor (L1)	60	30	0	90	Including job site surveys, access control badges & readers, recording software licenses, servers & workstations, all new CAT6 cabling, network switches, video storages, server racks, installations & trainings. Adding 2 Systems Analyst positions for IT network support
		2nd Floor (L2)	50	31	0	81	
		Computer Center (on LL3)	10	2	0	12	
		All Central IDF (Comm Room)	80		0	80	
		Security Office - Monitoring console, computer equipment, software, TVs and new furniture.	3	3	0	20	20 Network switch ports are for: security cameras, access control, TVs + computers and phones for the new furniture.
		Elevator CAB 1-11 (Except Elevator #7)		10			3-security cameras: 1-360 camera at the security desk, 1-4-way camera inside the office, behind the main entrance, 1-180 camera at the entrance door, before entering the office. Plus, 1 monitor behind the door, displaying the 180 degree camera - who is at the door.
		Access Controllers		12			
Central		LL4	50	17	0	67	
		LL3	45	9	0	54	
Central		LL2	50	18	0	68	
		LL1	50	32	0	82	
Central		3rd Floor (L3)	50	14	0	64	
		4th Floor (L4)	35	6	0	41	
Central Library Sub-total:			483	184	0	659	
Southern Area	13	26 Angeles Mesa	12	10	1	22	
		30 Ascot	12	10	1	22	
		06 *Exposition Park	25	20	1	45	
		68 Harbor City/Gateway	12	10	1	22	
		17 Jefferson	12	10	1	22	
		34 John Muir	12	10	1	22	
		07 Junipero Serra	12	10	1	22	
		45 Mark Twain	12	10	1	22	
		09 *San Pedro	25	20	1	45	
		14 Vermont Square	12	10	1	22	
		04 Vernon	12	10	1	22	
		43 Watts	12	10	1	22	
		10 Wilmington	12	10	1	22	
Northeast Area	13	05 *Arroyo Seco	25	20	1	45	
		01 Benjamin Franklin	12	10	1	22	
		63 Chinatown	12	10	1	22	
		28 Cypress Park	12	10	1	22	
		32 Eagle Rock	12	10	1	22	
		08 Echo Park	12	10	1	22	
		69 Edendale	12	10	1	22	
		21 El Sereno	12	10	1	22	
		02 Lincoln Heights	12	10	1	22	
		64 Little Tokyo	12	10	1	22	
		18 Malabar	12	10	1	22	
		19 R. L. Stevenson	12	10	1	22	
		72 Silver Lake	12	10	1	22	
Hollywood Area	13	44 Atwater Village	12	10	1	22	
		20 Cahuenga	12	10	1	22	
		61 Fairfax	12	10	1	22	
		48 Felipe de Neve	12	10	1	22	
		11 *Goldwyn-Hollywood	25	20	1	45	
		12 John C. Fremont	12	10	1	22	
		36 Los Feliz	12	10	1	22	
		49 Memorial	12	10	1	22	
		70 Pico Union	12	10	1	22	
		03 Pico Pico-Koreatown	12	10	1	22	
		41 Washington Irving	12	10	1	22	
		31 Will & Ariel Durant	12	10	1	22	
		29 Wilshire	12	10	1	22	
Western Area	12	46 Baldwin Hills	12	10	1	22	
		16 Brentwood	12	10	1	22	
		33 Hyde Park	12	10	1	22	
		38 Mar Vista	12	10	1	22	
		15 Palisades	12	10	1	22	
		22 Palms-Rancho Park	12	10	1	22	
		55 Playa Vista	12	10	1	22	
		42 Robertson	12	10	1	22	
		40 Venice	12	10	1	22	
		27 *West Los Angeles	25	20	1	45	
		13 Westchester-Loyola	12	10	1	22	
		71 Westwood	12	10	1	22	
East Valley Area	11	62 Lake View Terrace	12	10	1	22	
		37 *North Hollywood	25	20	1	45	
		53 Pacoima	12	10	1	22	
		39 Panorama City	12	10	1	22	
		51 Sherman Oaks	12	10	1	22	
		25 Studio City	12	10	1	22	
		52 Sun Valley	12	10	1	22	
		35 Sunland-Tujunga	12	10	1	22	
		54 Sylmar	12	10	1	22	
		57 Valley Plaza	12	10	1	22	
		23 Van Nuys	12	10	1	22	
West Valley Area	10	24 Canoga Park	12	10	1	22	
		60 Chatsworth	12	10	1	22	
		47 Encino-Tarzana	12	10	1	22	
		56 Granada Hills	12	10	1	22	
		66 *Mid-Valley	25	20	1	45	
		59 Northridge	12	10	1	22	
		65 Platt	12	10	1	22	
		67 Porter Ranch	12	10	1	22	
		50 *West Valley	25	20	1	45	
		58 Woodland Hills	12	10	1	22	
72		72 branch libraries' sub-total:	968	800	72	1768	
		Grand Total:	1451	984	72	2427	

PROPOSED SCHEDULE/PRICE FEE

The below table indicates a general guide for the required technical requirements for this RFP. The bidder is expected to provide its professional assessment as to what would meet the needs of LAPL. The description of items required serve as a point of reference. Bidder may expand tables as necessary.

A. IP Camera System

	Description	QTY	Cost	Total
1	Exterior HDTV IP Cameras Vandal/Environmental Proof. Quote for 3 megapixel : automatic zoom/focus control (HDTV 1080p)			
2	Interior HDTV IP Cameras Quote for 3 megapixel: automatic zoom/focus control (HDTV 1080p)			
3	IP Camera Management Software System			
4	IP Camera Accessories			
5	Network Video Controller with Network storage solution			
6	IP Camera Labor			
7	IP Camera Other			
8	Warranty			
9				
10				
	IP Camera Sub Total			

B. Keyless Door Access Controls with Security Camera Monitors at Doors

	Description	QTY	Cost	Total
1	Keyless Entry Door Controls			
2	Entry Door Video Camera/Buzzer			
3	Entry Door Video Monitor/Door Release Button at Reception area for all 5 Doors			
4	Connect Interior Fire doors to Door release button at reception area			
5	Door access control Labor			
6	Door Access Control other			
7				
8				
	Keyless Door Access Control Sub Total			

C. Network Upgrade Requirements for Implementation of IP camera Network

	Description	QTY	Cost	Total
1	Extreme Systems x460 24P Switch			
2	X460 Stacking Cables			
3	X460 Stacking Modules			
4	X460 10g Modules with SFP+			
5	X460 10g SFP's			
6	4 Strand Custom Line Indoor (Plenum) 10-GIG 50/125 OM3 Multimode fiber (IDF to IDF), (IDFx2 to MDF)			
7				
8				
9				
10				
11				
	Network Upgrade Subtotal			

Total Project Costs

Description	Total
IP Camera Sub Total	
Keyless Door Access Control Sub Total	
Network Upgrade Subtotal	
Grand Total	

