



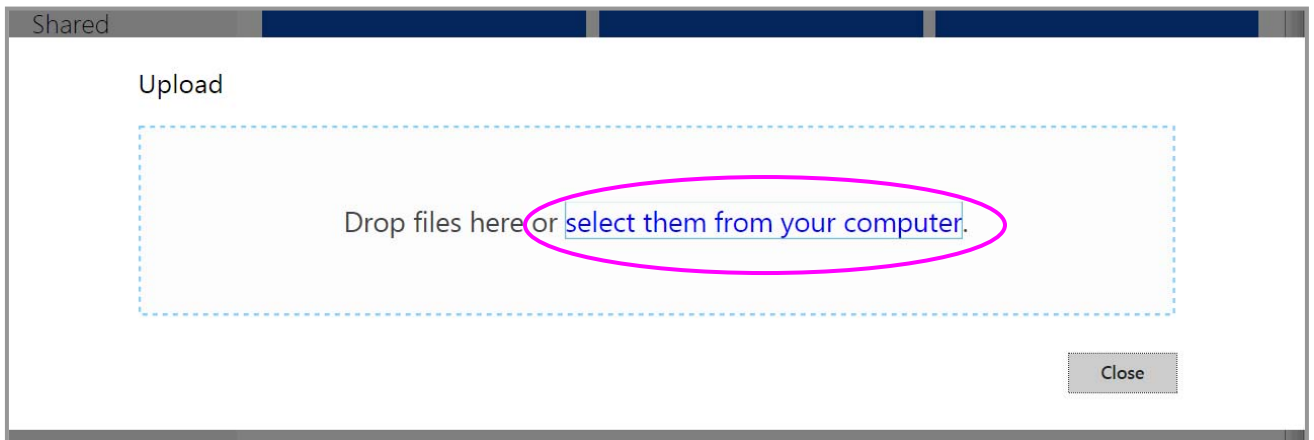
Opening a Document from a Flash Drive

Log into your SkyDrive account (www.skydrive.com)

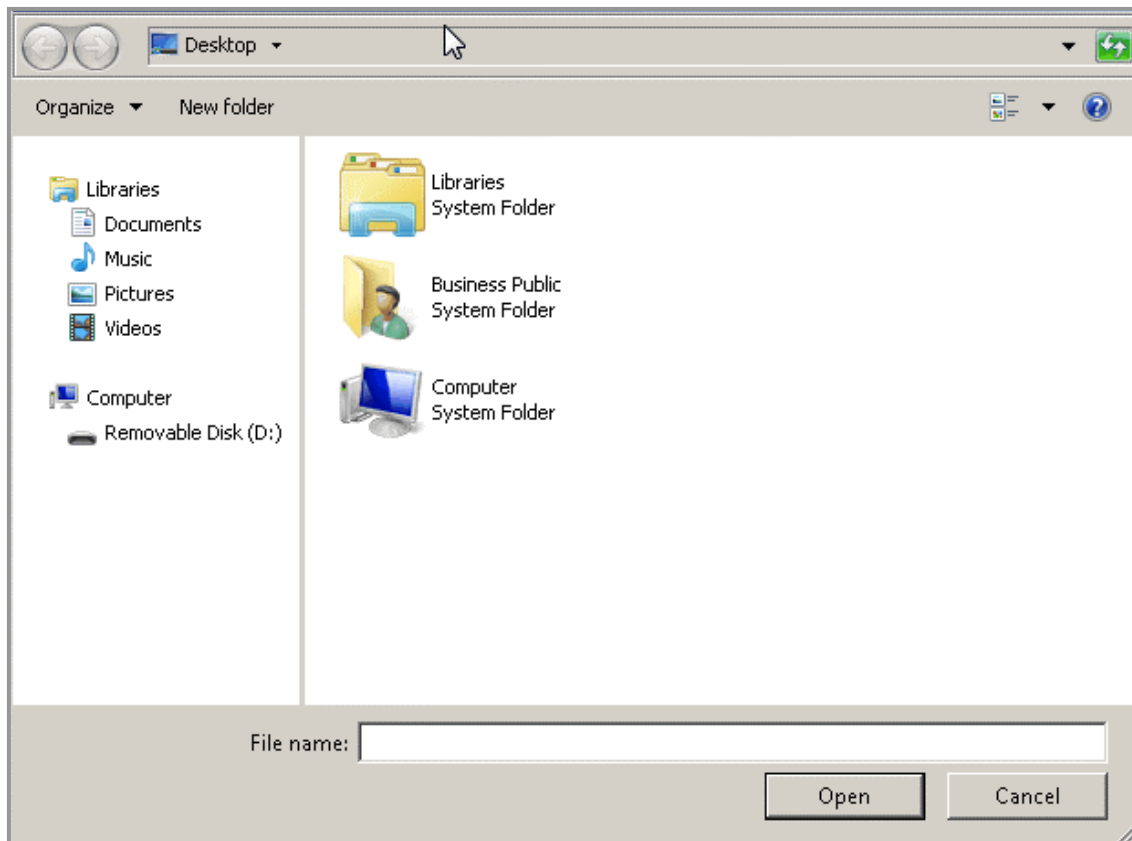
Click on *Upload*.



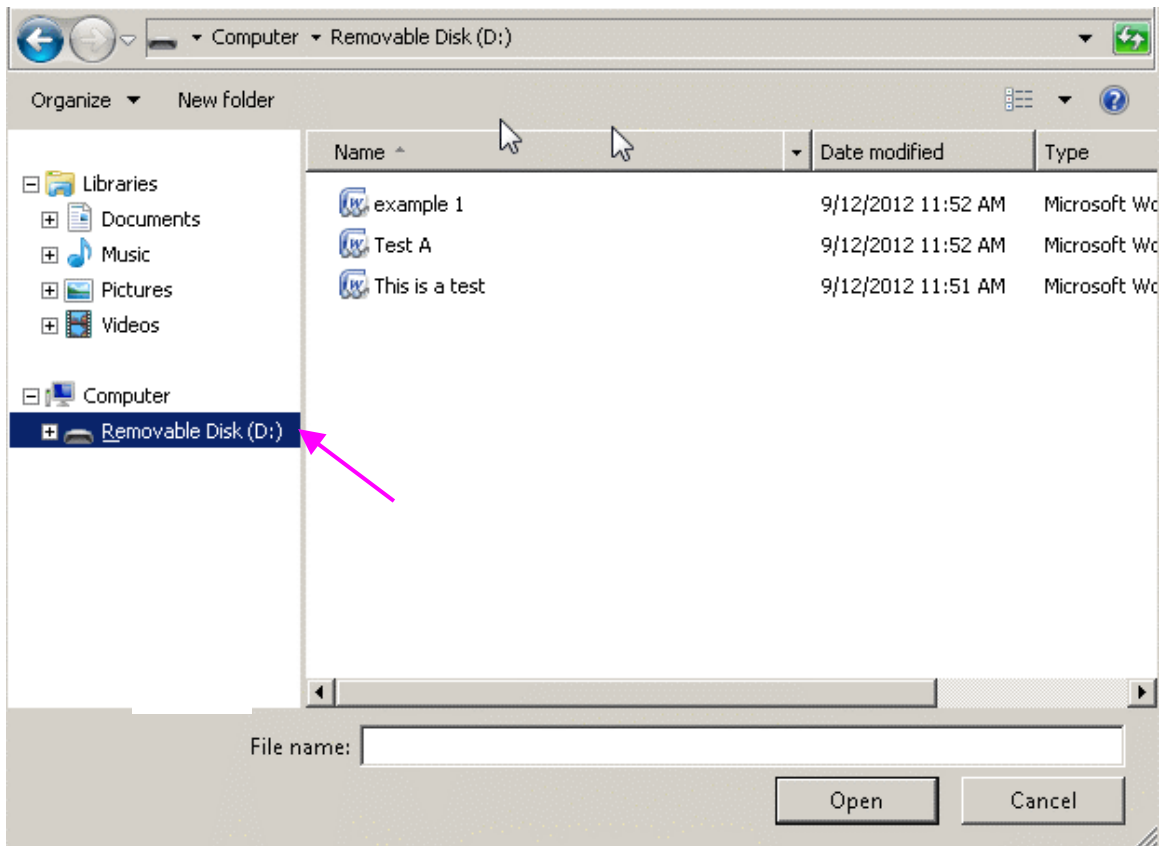
Click on *select them from your computer*.



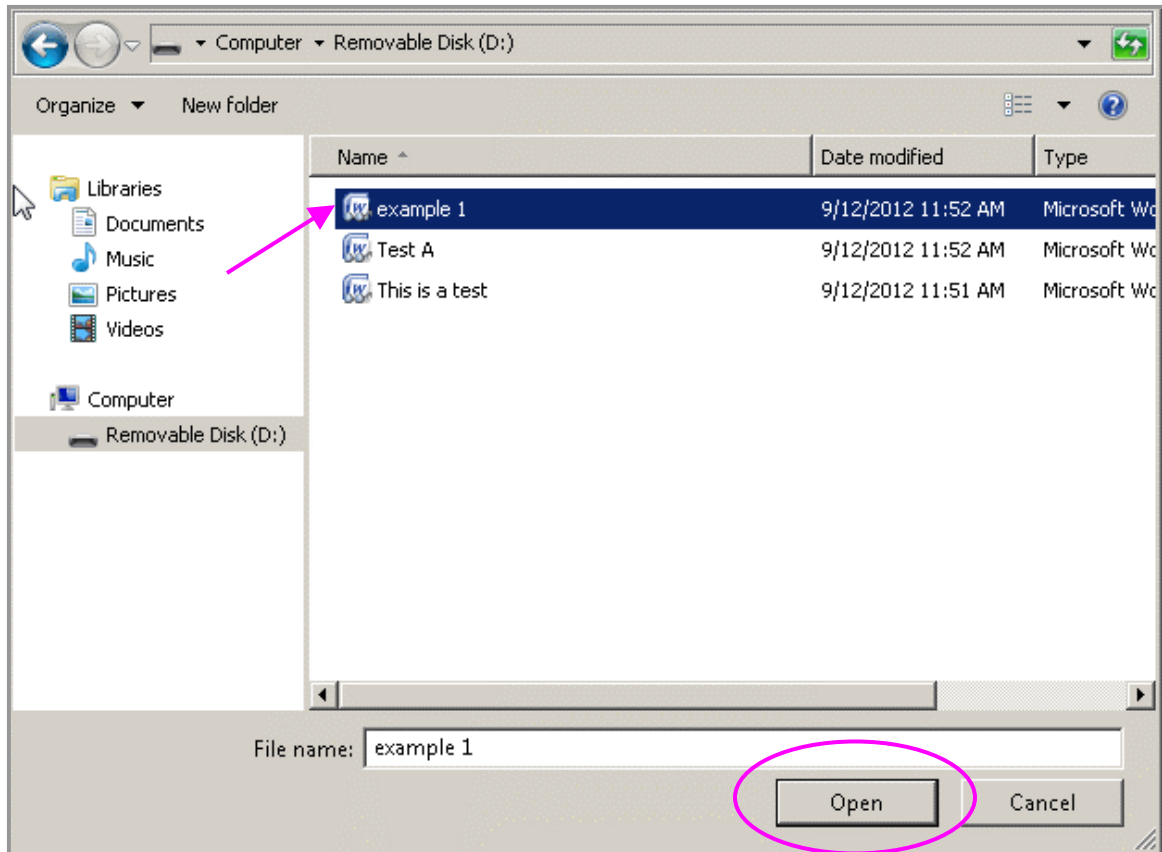
The system folder will open.



Click on **Removable Disk** from the left side menu. (Note: if **Removable Disk** is not displayed, double-clicking on **Computer** will cause it to appear.)



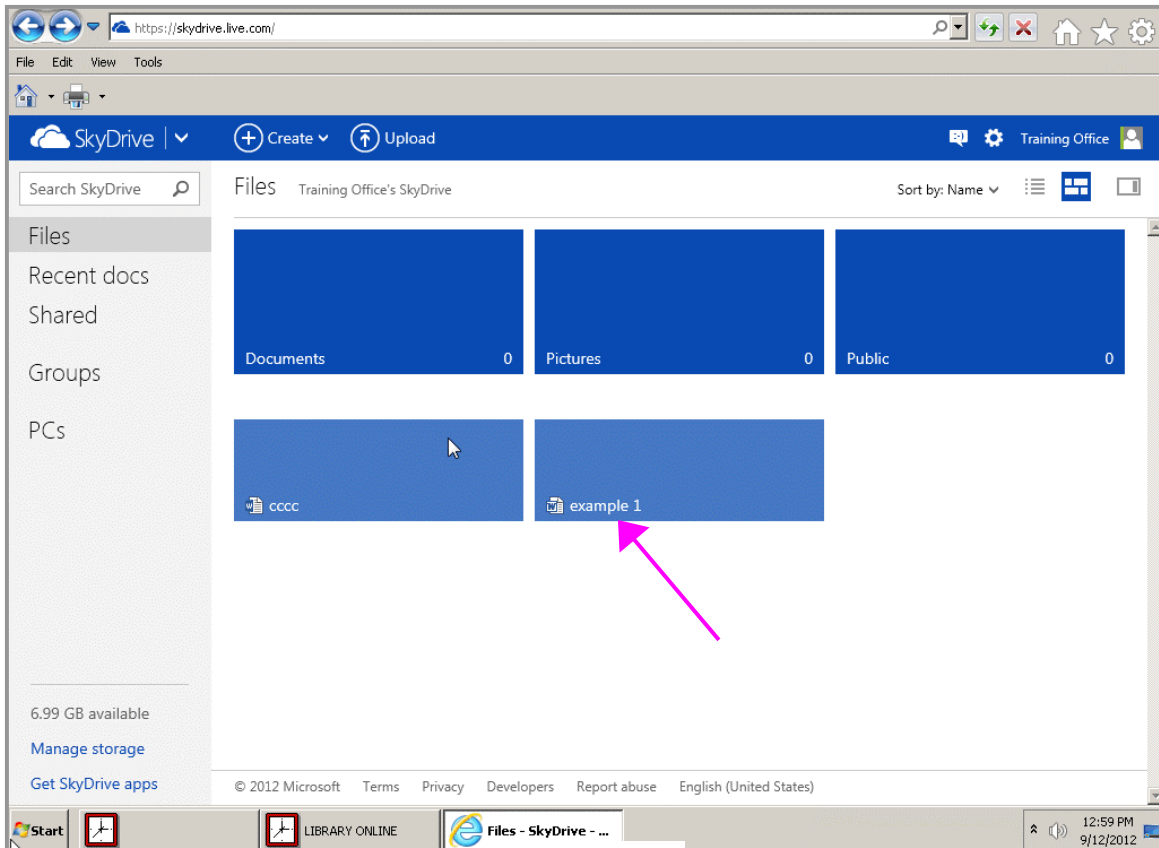
Click on file you wish to open, then click on *Open*.



A status window may appear at the bottom of the screen. It is ok if you do not see a status window.



When the process is complete (it may take a few seconds depending on the size of your file) your document will appear on the document list. To open the document, click on the document name.



To work on or edit the document, click on *Edit in Browser*.

